

# SPRED1 Rabbit pAb

Catalog No.: A14970

## Basic Information

### Observed MW

50kDa

### Calculated MW

50kDa

### Category

Primary antibody

### Applications

ELISA, WB

### Cross-Reactivity

Mouse

## Background

The protein encoded by this gene is a member of the Sprouty family of proteins and is phosphorylated by tyrosine kinase in response to several growth factors. The encoded protein can act as a homodimer or as a heterodimer with SPRED2 to regulate activation of the MAP kinase cascade. Defects in this gene are a cause of neurofibromatosis type 1-like syndrome (NFLS).

## Recommended Dilutions

WB 1:500 - 1:2000

## Immunogen Information

### Gene ID

161742

### Swiss Prot

Q7Z699

### Immunogen

Recombinant fusion protein containing a sequence corresponding to amino acids 120-320 of human SPRED1 (NP\_689807.1).

### Synonyms

LGSS; NFLS; hSpred1; spread-1; PPP1R147; SPRED1

## Contact

☎ | 400-999-6126

✉ | [cn.market@abclonal.com.cn](mailto:cn.market@abclonal.com.cn)

🌐 | [www.abclonal.com.cn](http://www.abclonal.com.cn)

## Product Information

### Source

Rabbit

### Isotype

IgG

### Purification

Affinity purification

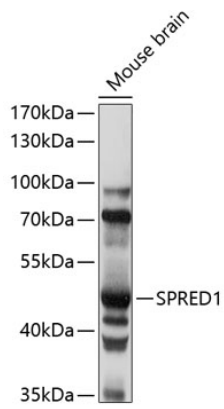
### Storage

Store at -20°C. Avoid freeze / thaw cycles.

Buffer: PBS with 0.01% thimerosal, 50% glycerol, pH7.3.

## Validation Data

---



Western blot analysis of lysates from mouse brain, using SPRED1 Rabbit pAb (A14970) at 1:1000 dilution.  
Secondary antibody: HRP Goat Anti-Rabbit IgG (H+L) (AS014) at 1:10000 dilution.  
Lysates/proteins: 25µg per lane.  
Blocking buffer: 3% nonfat dry milk in TBST.  
Detection: ECL Basic Kit (RM00020).  
Exposure time: 1s.