

RIMS2 Rabbit pAb

Catalog No.: A14990

Basic Information

Observed MW

165kDa

Calculated MW

160kDa

Category

Primary antibody

Applications

ELISA, WB

Cross-Reactivity

Human, Rat

Background

The protein encoded by this gene is a presynaptic protein that interacts with RAB3, a protein important for normal neurotransmitter release. The encoded protein can also bind several other synaptic proteins, including UNC-13 homolog B, ELKS/Rab6-interacting/CAST family member 1, and synaptotagmin 1. This protein is involved in synaptic membrane exocytosis. Polymorphisms in this gene have been associated with degenerative lumbar scoliosis.

Recommended Dilutions

WB 1:500 - 1:2000

Immunogen Information

Gene ID

9699

Swiss Prot

Q9UQ26

Immunogen

Recombinant fusion protein containing a sequence corresponding to amino acids 1-350 of human RIMS2 (NP_055492.3).

Synonyms

OBOE; RIM2; CRSDS; RAB3IP3; RIMS2

Contact

☎ | 400-999-6126

✉ | cn.market@abclonal.com.cn

🌐 | www.abclonal.com.cn

Product Information

Source

Rabbit

Isotype

IgG

Purification

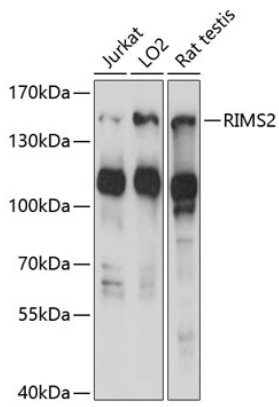
Affinity purification

Storage

Store at -20°C. Avoid freeze / thaw cycles.

Buffer: PBS with 0.01% thimerosal, 50% glycerol, pH7.3.

Validation Data



Western blot analysis of various lysates using RIMS2 Rabbit pAb (A14990) at 1:1000 dilution.
Secondary antibody: HRP Goat Anti-Rabbit IgG (H+L) (AS014) at 1:10000 dilution.
Lysates/proteins: 25µg per lane.
Blocking buffer: 3% nonfat dry milk in TBST.
Detection: ECL Basic Kit (RM00020).
Exposure time: 15s.