

# ABI2 Rabbit pAb

Catalog No.: A14992

## Basic Information

### Observed MW

50kDa

### Calculated MW

56kDa

### Category

Primary antibody

### Applications

ELISA, WB

### Cross-Reactivity

Human, Mouse

## Background

Enables several functions, including SH3 domain binding activity; identical protein binding activity; and ubiquitin protein ligase binding activity. Contributes to small GTPase binding activity. Involved in Rac protein signal transduction; positive regulation of cellular component organization; and zonula adherens assembly. Acts upstream of or within peptidyl-tyrosine phosphorylation. Located in several cellular components, including filopodium tip; lamellipodium; and nucleoplasm. Part of SCAR complex. Is active in adherens junction. Colocalizes with actin filament.

## Recommended Dilutions

WB 1:500 - 1:2000

## Immunogen Information

### Gene ID

10152

### Swiss Prot

Q9NYB9

### Immunogen

A synthetic peptide corresponding to a sequence within amino acids 100-200 of human ABI2 (NP\_001269854.1).

### Synonyms

AIP1; ABI-2; ABI2B; AIP-1; AbIBP3; argBP1; SSH3BP2; argBPIA; argBPIB; ABI2

## Contact

☎ | 400-999-6126

✉ | [cn.market@abclonal.com.cn](mailto:cn.market@abclonal.com.cn)

🌐 | [www.abclonal.com.cn](http://www.abclonal.com.cn)

## Product Information

### Source

Rabbit

### Isotype

IgG

### Purification

Affinity purification

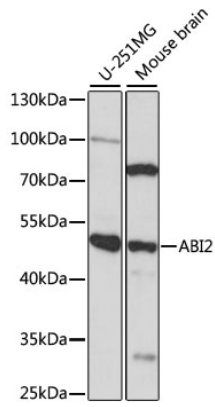
### Storage

Store at -20°C. Avoid freeze / thaw cycles.

Buffer: PBS with 0.01% thimerosal, 50% glycerol, pH7.3.

## Validation Data

---



Western blot analysis of various lysates using ABI2 Rabbit pAb (A14992) at 1:1000 dilution.  
Secondary antibody: HRP Goat Anti-Rabbit IgG (H+L) (AS014) at 1:10000 dilution.  
Lysates/proteins: 25µg per lane.  
Blocking buffer: 3% nonfat dry milk in TBST.  
Detection: ECL Basic Kit (RM00020).  
Exposure time: 90s.