

REC8 Rabbit pAb

Catalog No.: A15002

Basic Information

Observed MW

90kDa

Calculated MW

67kDa

Category

Primary antibody

Applications

ELISA,WB

Cross-Reactivity

Rat

Background

Predicted to enable chromatin binding activity. Acts upstream of or within several processes, including gamete generation; seminiferous tubule development; and synaptonemal complex assembly. Located in kinetochore; lateral element; and male germ cell nucleus. Part of nuclear meiotic cohesin complex. Is expressed in several structures, including alimentary system; central nervous system; genitourinary system; respiratory system; and sensory organ. Orthologous to human REC8 (REC8 meiotic recombination protein).

Recommended Dilutions

WB 1:500 - 1:2000

Immunogen Information

Gene ID

56739

Swiss Prot

Immunogen

Recombinant fusion protein containing a sequence corresponding to amino acids 194-561 of mouse REC8 (NP_064386.2).

Synonyms

mrec; Rec8L1; REC8

Contact

 | 400-999-6126

 | cn.market@abclonal.com.cn

 | www.abclonal.com.cn

Product Information

Source

Rabbit

Isotype

IgG

Purification

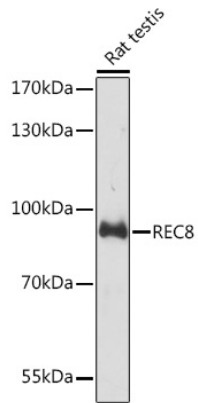
Affinity purification

Storage

Store at -20°C. Avoid freeze / thaw cycles.

Buffer: PBS with 0.01% thimerosal, 50% glycerol, pH7.3.

Validation Data



Western blot analysis of lysates from Rat testis, using REC8 Rabbit pAb (A15002) at 1:3000 dilution.
Secondary antibody: HRP Goat Anti-Rabbit IgG (H+L) (AS014) at 1:10000 dilution.
Lysates/proteins: 25µg per lane.
Blocking buffer: 3% nonfat dry milk in TBST.
Detection: ECL Basic Kit (RM00020).
Exposure time: 30s.