

YTHDC2 Rabbit pAb

Catalog No.: A15004 **5 Publications**

Basic Information

Observed MW

160kDa

Calculated MW

160kDa

Category

Primary antibody

Applications

ELISA, WB

Cross-Reactivity

Human, Mouse, Rat

Background

This gene encodes a member of the DEAH (Asp-Glu-Ala-His) subfamily of proteins, part of the DEAD (Asp-Glu-Ala-Asp) box family of RNA helicases. The encoded protein binds to N6-methyladenosine, a common modified RNA nucleotide that is enriched in the stop codons and 3' UTRs of eukaryotic messenger RNAs. Binding of proteins to this modified nucleotide may regulate mRNA translation and stability. This gene may be associated with susceptibility to pancreatic cancer in human patients, and knockdown of this gene resulted in reduced proliferation in a human liver cancer cell line.

Recommended Dilutions

WB 1:500 - 1:2000

Immunogen Information

Gene ID

64848

Swiss Prot

Q9H6S0

Immunogen

Recombinant fusion protein containing a sequence corresponding to amino acids 1131-1430 of human YTHDC2 (NP_073739.3).

Synonyms

CAHL; hYTHDC2; YTHDC2

Contact

☎ | 400-999-6126

✉ | cn.market@abclonal.com.cn

🌐 | www.abclonal.com.cn

Product Information

Source

Rabbit

Isotype

IgG

Purification

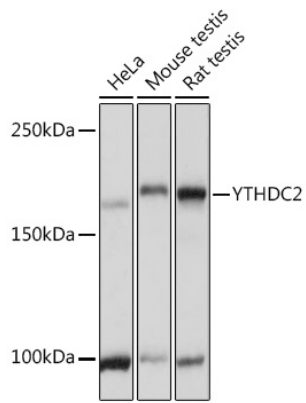
Affinity purification

Storage

Store at -20°C. Avoid freeze / thaw cycles.

Buffer: PBS with 0.01% thimerosal, 50% glycerol, pH7.3.

Validation Data



Western blot analysis of various lysates using YTHDC2 Rabbit pAb (A15004) at 1:3000 dilution.
Secondary antibody: HRP Goat Anti-Rabbit IgG (H+L) (AS014) at 1:10000 dilution.
Lysates/proteins: 25µg per lane.
Blocking buffer: 3% nonfat dry milk in TBST.
Detection: ECL Basic Kit (RM00020).
Exposure time: 1s.