

SGMS1 Rabbit pAb

Catalog No.: A15008 **1 Publications**

Basic Information

Observed MW

49kDa

Calculated MW

49kDa

Category

Primary antibody

Applications

ELISA, WB, IF/ICC

Cross-Reactivity

Human, Rat

Background

The protein encoded by this gene is predicted to be a five-pass transmembrane protein. This gene may be predominately expressed in brain.

Recommended Dilutions

WB	1:500 - 1:2000
IF/ICC	1:50 - 1:200

Immunogen Information

Gene ID

259230

Swiss Prot

Q86VZ5

Immunogen

Recombinant fusion protein containing a sequence corresponding to amino acids 1-134 of human SGMS1 (NP_671512.1).

Synonyms

MOB; MOB1; SMS1; TMEM23; hmob33; SGMS1

Contact

 | 400-999-6126

 | cn.market@abclonal.com.cn

 | www.abclonal.com.cn

Product Information

Source

Rabbit

Isotype

IgG

Purification

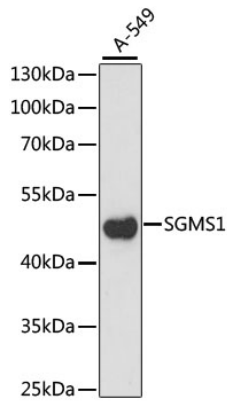
Affinity purification

Storage

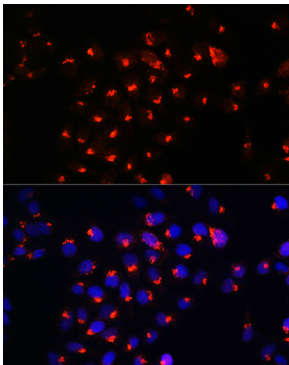
Store at -20°C. Avoid freeze / thaw cycles.

Buffer: PBS with 0.01% thimerosal, 50% glycerol, pH7.3.

Validation Data



Western blot analysis of lysates from A-549 cells, using SGMS1 Rabbit pAb (A15008) at 1:1000 dilution.
Secondary antibody: HRP Goat Anti-Rabbit IgG (H+L) (AS014) at 1:10000 dilution.
Lysates/proteins: 25µg per lane.
Blocking buffer: 3% nonfat dry milk in TBST.
Detection: ECL Enhanced Kit (RM00021).
Exposure time: 930s.



Immunofluorescence analysis of HeLa cells using SGMS1 Rabbit pAb (A15008) at dilution of 1:100. Secondary antibody: Cy3 Goat Anti-Rabbit IgG (H+L) (AS007) at 1:500 dilution. Blue: DAPI for nuclear staining.