

SLC25A4/ANT1 Rabbit pAb

Catalog No.: A15027

Basic Information

Observed MW

33kDa

Calculated MW

33kDa

Category

Primary antibody

Applications

ELISA, WB, IF/ICC

Cross-Reactivity

Human, Mouse, Rat

Background

This gene is a member of the mitochondrial carrier subfamily of solute carrier protein genes. The product of this gene functions as a gated pore that translocates ADP from the cytoplasm into the mitochondrial matrix and ATP from the mitochondrial matrix into the cytoplasm. The protein forms a homodimer embedded in the inner mitochondria membrane. Mutations in this gene have been shown to result in autosomal dominant progressive external ophthalmoplegia and familial hypertrophic cardiomyopathy.

Recommended Dilutions

WB	1:500 - 1:2000
IF/ICC	1:50 - 1:200

Immunogen Information

Gene ID

291

Swiss Prot

P12235

Immunogen

A synthetic peptide corresponding to a sequence within amino acids 40-298 of human SLC25A4/ANT1 (NP_001142.2).

Synonyms

T1; ANT; AAC1; ANT1; PEO2; PEO3; ANT 1; PEOA2; MTDPS12; MTDPS12A; SLC25A4/ANT1

Contact

	400-999-6126
	cn.market@abclonal.com.cn
	www.abclonal.com.cn

Product Information

Source

Rabbit

Isotype

IgG

Purification

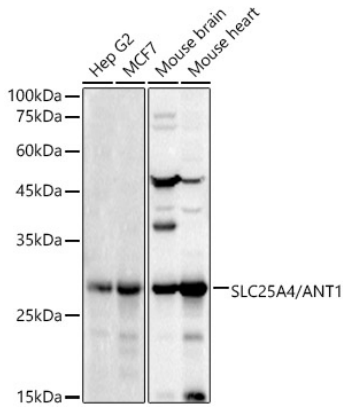
Affinity purification

Storage

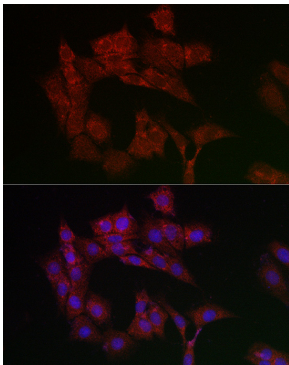
Store at -20°C. Avoid freeze / thaw cycles.

Buffer: PBS with 0.05% proclin300, 50% glycerol, pH7.3.

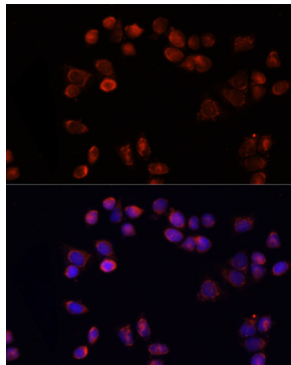
Validation Data



Western blot analysis of various lysates, using SLC25A4/ANT1 Rabbit pAb (A15027) at 1:1000 dilution.
Secondary antibody: HRP Goat Anti-Rabbit IgG (H+L) (AS014) at 1:10000 dilution.
Lysates/proteins: 25ug per lane.
Blocking buffer: 3% nonfat dry milk in TBST.
Detection: ECL Basic Kit (RM00020).
Exposure time: 10s.



Immunofluorescence analysis of PC-12 cells using SLC25A4/ANT1 Rabbit pAb (A15027) at dilution of 1:200 (40x lens). Blue: DAPI for nuclear staining.



Immunofluorescence analysis of HeLa cells using SLC25A4/ANT1 antibody (A15027) at dilution of 1:100 (40x lens). Blue: DAPI for nuclear staining.