

# CLCA1 Rabbit pAb

Catalog No.: A15041 **1 Publications**

## Basic Information

### Observed MW

85kDa

### Calculated MW

100kDa

### Category

Primary antibody

### Applications

ELISA, WB, IF/ICC

### Cross-Reactivity

Human, Mouse, Rat

## Background

This gene encodes a member of the calcium sensitive chloride conductance protein family. To date, all members of this gene family map to the same region on chromosome 1p31-p22 and share a high degree of homology in size, sequence, and predicted structure, but differ significantly in their tissue distributions. The encoded protein is expressed as a precursor protein that is processed into two cell-surface-associated subunits, although the site at which the precursor is cleaved has not been precisely determined. The encoded protein may be involved in mediating calcium-activated chloride conductance in the intestine.

## Recommended Dilutions

<b>WB</b>	1:500 - 1:2000
<b>IF/ICC</b>	1:50 - 1:100

## Immunogen Information

### Gene ID

1179

### Swiss Prot

A8K714

### Immunogen

Recombinant fusion protein containing a sequence corresponding to amino acids 22-150 of human CLCA1 (NP\_001276.2).

### Synonyms

CACC; GOB5; CACC1; CLCRG1; CaCC-1; hCLCA1; hCaCC-1; CLCA1

## Contact

☎ | 400-999-6126

✉ | [cn.market@abclonal.com.cn](mailto:cn.market@abclonal.com.cn)

🌐 | [www.abclonal.com.cn](http://www.abclonal.com.cn)

## Product Information

### Source

Rabbit

### Isotype

IgG

### Purification

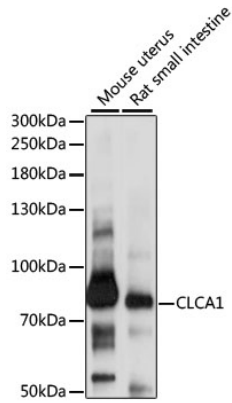
Affinity purification

### Storage

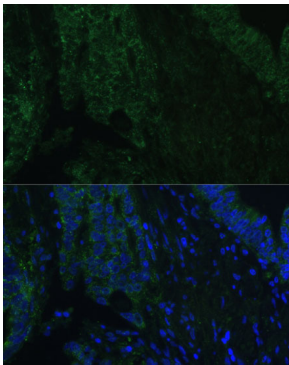
Store at -20°C. Avoid freeze / thaw cycles.

Buffer: PBS with 0.01% thimerosal, 50% glycerol, pH7.3.

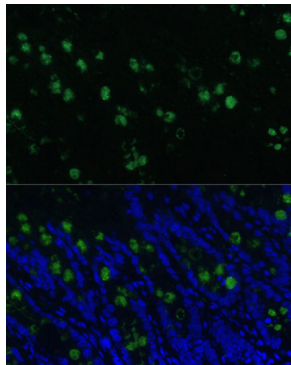
## Validation Data



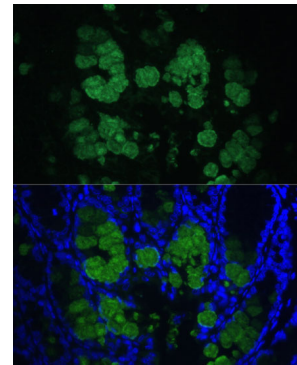
Western blot analysis of various lysates using CLCA1 Rabbit pAb (A15041) at 1:1000 dilution. Secondary antibody: HRP Goat Anti-Rabbit IgG (H+L) (AS014) at 1:10000 dilution. Lysates/proteins: 25µg per lane. Blocking buffer: 3% nonfat dry milk in TBST. Detection: ECL Basic Kit (RM00020). Exposure time: 20s.



Immunofluorescence analysis of paraffin-embedded human colon carcinoma using CLCA1 Rabbit pAb (A15041) at dilution of 1:100 (40x lens). Secondary antibody: Cy3 Goat Anti-Rabbit IgG (H+L) (AS007) at 1:500 dilution. Blue: DAPI for nuclear staining.



Immunofluorescence analysis of paraffin-embedded rat colon using CLCA1 Rabbit pAb (A15041) at dilution of 1:100 (40x lens). Secondary antibody: Cy3 Goat Anti-Rabbit IgG (H+L) (AS007) at 1:500 dilution. Blue: DAPI for nuclear staining.



Immunofluorescence analysis of paraffin-embedded mouse colon using CLCA1 Rabbit pAb (A15041) at dilution of 1:100 (40x lens). Secondary antibody: Cy3 Goat Anti-Rabbit IgG (H+L) (AS007) at 1:500 dilution. Blue: DAPI for nuclear staining.