

# LTB4R Rabbit pAb

Catalog No.: A15042

## Basic Information

### Observed MW

38kDa

### Calculated MW

38kDa

### Category

Primary antibody

### Applications

WB,ELISA

### Cross-Reactivity

Mouse, Rat

## Background

Predicted to enable G protein-coupled peptide receptor activity and leukotriene B4 receptor activity. Predicted to be involved in inflammatory response and neuropeptide signaling pathway. Predicted to act upstream of or within signal transduction. Predicted to be located in plasma membrane. Predicted to be integral component of plasma membrane.

## Recommended Dilutions

**WB** 1:500 - 1:1000

**ELISA** Recommended starting concentration is 1 µg/mL. Please optimize the concentration based on your specific assay requirements.

## Immunogen Information

### Gene ID

1241

### Swiss Prot

Q15722

### Immunogen

A synthetic peptide corresponding to a sequence within amino acids 253-352 of human LTB4R (NP\_001137391.1).

### Synonyms

BLT1; BLTR; P2Y7; GPR16; LTBR1; P2RY7; CMKRL1; LTB4R1; LTB4R

## Contact

☎ | 400-999-6126

✉ | [cn.market@abclonal.com.cn](mailto:cn.market@abclonal.com.cn)

🌐 | [www.abclonal.com.cn](http://www.abclonal.com.cn)

## Product Information

### Source

Rabbit

### Isotype

IgG

### Purification

Affinity purification

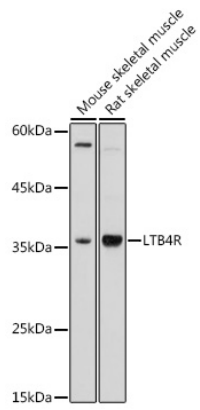
### Storage

Store at -20°C. Avoid freeze / thaw cycles.

Buffer: PBS with 0.01% thimerosal, 50% glycerol, pH7.3.

## Validation Data

---



Western blot analysis of various lysates using LTB4R Rabbit pAb (A15042) at 1:1000 dilution.  
Secondary antibody: HRP-conjugated Goat anti-Rabbit IgG (H+L) (AS014) at 1:10000 dilution.  
Lysates/proteins: 25µg per lane.  
Blocking buffer: 3% nonfat dry milk in TBST.  
Detection: ECL Basic Kit (RM00020).  
Exposure time: 180s.