

# CTRB1 Rabbit pAb

Catalog No.: A15043 **2 Publications**

## Basic Information

**Observed MW**

28kDa

**Calculated MW**

28kDa

**Category**

Primary antibody

**Applications**

ELISA,WB,IHC-P,IF/ICC

**Cross-Reactivity**

Human, Mouse, Rat

## Background

This gene encodes a member of the serine protease family of enzymes and forms a principal precursor of the pancreatic proteolytic enzymes. The encoded preproprotein is synthesized in the acinar cells of the pancreas and secreted into the small intestine where it undergoes proteolytic activation to generate a functional enzyme. This CTRB1 gene is located head-to-head with the related CTRB2 gene. Some human populations have an alternate haplotype which inverts a 16.6 Kb region containing portions of intron 1, exon 1, and the upstream sequence of the CTRB1 and CTRB2 genes. In this inversion haplotype exon 1 and flanking sequence is swapped in CTRB1 and CTRB2. This inversion is associated with differential gene expression and increased risk for chronic pancreatitis. The GRCh38 assembly represents the minor allele for SNP rs8048956 of the CTRB1 gene. SNP rs8048956 in intron 1 of the CTRB2 gene is diagnostic for this inversion. This CTRB1 gene encodes distinct isoforms, some or all of which may undergo similar processing to generate the mature protein.

## Recommended Dilutions

<b>WB</b>	1:500 - 1:2000
<b>IHC-P</b>	1:50 - 1:100
<b>IF/ICC</b>	1:50 - 1:100

## Immunogen Information

**Gene ID**

1504

**Swiss Prot**

P17538

**Immunogen**

Recombinant fusion protein containing a sequence corresponding to amino acids 79-263 of human CTRB1 (NP\_001897.4).

**Synonyms**

CTRB; CTRB1

## Contact

 | 400-999-6126 | [cn.market@abclonal.com.cn](mailto:cn.market@abclonal.com.cn) | [www.abclonal.com.cn](http://www.abclonal.com.cn)

## Product Information

**Source**

Rabbit

**Isotype**

IgG

**Purification**

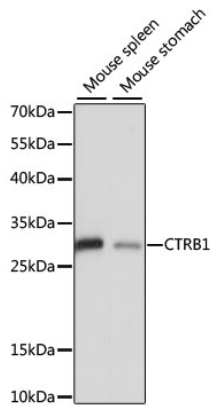
Affinity purification

**Storage**

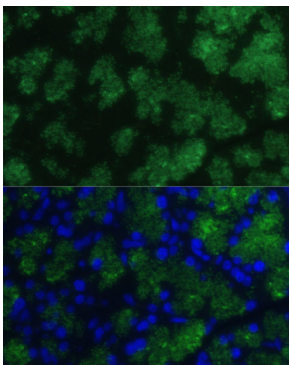
Store at -20°C. Avoid freeze / thaw cycles.

Buffer: PBS with 0.01% thimerosal,50% glycerol,pH7.3.

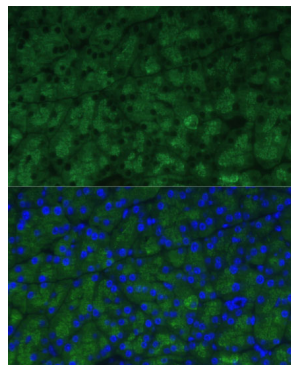
## Validation Data



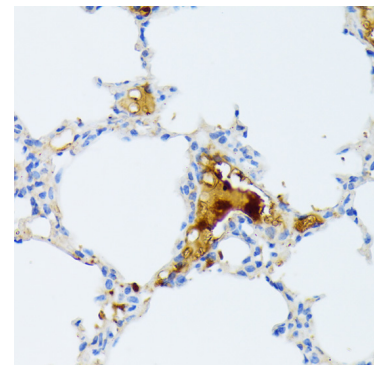
Western blot analysis of various lysates using CTRB1 Rabbit pAb (A15043) at 1:1000 dilution. Secondary antibody: HRP Goat Anti-Rabbit IgG (H+L) (AS014) at 1:10000 dilution. Lysates/proteins: 25µg per lane. Blocking buffer: 3% nonfat dry milk in TBST. Detection: ECL Basic Kit (RM00020). Exposure time: 5s.



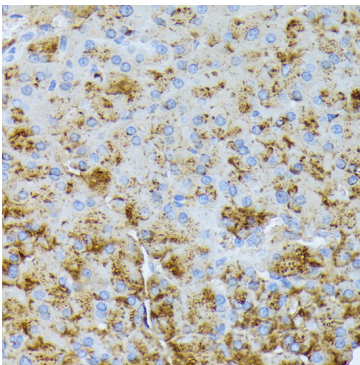
Immunofluorescence analysis of paraffin-embedded rat pancreas using CTRB1 Rabbit pAb (A15043) at dilution of 1:100 (40x lens). Secondary antibody: Cy3 Goat Anti-Rabbit IgG (H+L) (AS007) at 1:500 dilution. Blue: DAPI for nuclear staining.



Immunofluorescence analysis of paraffin-embedded mouse pancreas using CTRB1 Rabbit pAb (A15043) at dilution of 1:100 (40x lens). Secondary antibody: Cy3 Goat Anti-Rabbit IgG (H+L) (AS007) at 1:500 dilution. Blue: DAPI for nuclear staining.



Immunohistochemistry analysis of paraffin-embedded mouse lung using CTRB1 Rabbit pAb (A15043) at dilution of 1:100 (40x lens). Perform microwave antigen retrieval with 10 mM PBS buffer pH 7.2 before commencing with IHC staining protocol.



Immunohistochemistry analysis of paraffin-embedded mouse pancreas using CTRB1 Rabbit pAb (A15043) at dilution of 1:100 (40x lens). Perform microwave antigen retrieval with 10 mM PBS buffer pH 7.2 before commencing with IHC staining protocol.