

# GMDS Rabbit pAb

Catalog No.: A15060

## Basic Information

### Observed MW

42kDa

### Calculated MW

42kDa

### Category

Primary antibody

### Applications

ELISA, WB

### Cross-Reactivity

Human

## Background

GDP-mannose 4,6-dehydratase (GMD; EC 4.2.1.47) catalyzes the conversion of GDP-mannose to GDP-4-keto-6-deoxymannose, the first step in the synthesis of GDP-fucose from GDP-mannose, using NADP<sup>+</sup> as a cofactor. The second and third steps of the pathway are catalyzed by a single enzyme, GDP-keto-6-deoxymannose 3,5-epimerase, 4-reductase, designated FX in humans (MIM 137020).

## Recommended Dilutions

WB 1:500 - 1:2000

## Immunogen Information

### Gene ID

2762

### Swiss Prot

O60547

### Immunogen

A synthetic peptide corresponding to a sequence within amino acids 1-100 of human GMDS (NP\_001491.1).

### Synonyms

GMD; SDR3E1; GMDS

## Contact

 | 400-999-6126

 | [cn.market@abclonal.com.cn](mailto:cn.market@abclonal.com.cn)

 | [www.abclonal.com.cn](http://www.abclonal.com.cn)

## Product Information

### Source

Rabbit

### Isotype

IgG

### Purification

Affinity purification

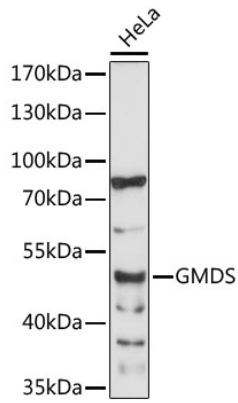
### Storage

Store at -20°C. Avoid freeze / thaw cycles.

Buffer: PBS with 0.01% thimerosal, 50% glycerol, pH7.3.

## Validation Data

---



Western blot analysis of lysates from HeLa cells, using GMDS Rabbit pAb (A15060) at 1:1000 dilution.  
Secondary antibody: HRP Goat Anti-Rabbit IgG (H+L) (AS014) at 1:10000 dilution.  
Lysates/proteins: 25µg per lane.  
Blocking buffer: 3% nonfat dry milk in TBST.  
Detection: ECL Enhanced Kit (RM00021).  
Exposure time: 60s.