

# PP2A-B56δ/PR61δ/PPP2R5E Rabbit pAb

Catalog No.: A15084

## Basic Information

### Observed MW

54kDa

### Calculated MW

55kDa

### Category

Primary antibody

### Applications

ELISA, WB

### Cross-Reactivity

Human, Mouse

## Background

The protein encoded by this gene belongs to the phosphatase 2A regulatory subunit B family. Protein phosphatase 2A is one of the four major Ser/Thr phosphatases, and it is implicated in the negative control of cell growth and division. It consists of a common heteromeric core enzyme, which is composed of a catalytic subunit and a constant regulatory subunit, that associates with a variety of regulatory subunits. The B regulatory subunit might modulate substrate selectivity and catalytic activity. This gene encodes an epsilon isoform of the regulatory subunit B56 subfamily. Multiple transcript variants encoding several different isoforms have been found for this gene.

## Recommended Dilutions

WB 1:500 - 1:2000

## Immunogen Information

### Gene ID

5529

### Swiss Prot

Q16537

### Immunogen

A synthetic peptide corresponding to a sequence within amino acids 50-150 of human PP2A-B56δ/PR61δ/PPP2R5E (NP\_006237.1).

### Synonyms

B56E; B56epsilon; PP2A-B56δ/PR61δ/PPP2R5E

## Contact

☎ | 400-999-6126

✉ | [cn.market@abclonal.com.cn](mailto:cn.market@abclonal.com.cn)

🌐 | [www.abclonal.com.cn](http://www.abclonal.com.cn)

## Product Information

### Source

Rabbit

### Isotype

IgG

### Purification

Affinity purification

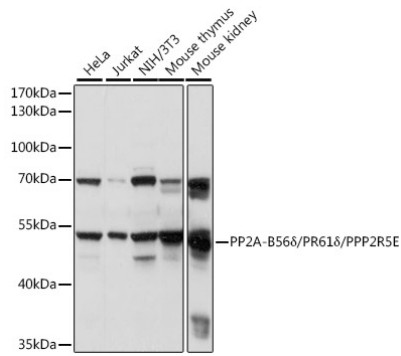
### Storage

Store at -20°C. Avoid freeze / thaw cycles.

Buffer: PBS with 0.01% thimerosal, 50% glycerol, pH7.3.

## Validation Data

---



Western blot analysis of various lysates using PP2A-B566/PR616/PPP2R5E Rabbit pAb (A15084) at 1:1000 dilution.

Secondary antibody: HRP Goat Anti-Rabbit IgG (H+L) (AS014) at 1:10000 dilution.

Lysates/proteins: 25µg per lane.

Blocking buffer: 3% nonfat dry milk in TBST.

Detection: ECL Basic Kit (RM00020).

Exposure time: 1s.