

RPL6 Rabbit pAb

Catalog No.: A15094 **2 Publications**

Basic Information

Observed MW

38kDa

Calculated MW

33kDa

Category

Primary antibody

Applications

ELISA, WB, IF/ICC

Cross-Reactivity

Human, Mouse, Rat

Background

This gene encodes a protein component of the 60S ribosomal subunit. This protein can bind specifically to domain C of the tax-responsive enhancer element of human T-cell leukemia virus type 1, and may participate in tax-mediated transactivation of transcription. As is typical for genes encoding ribosomal proteins, there are multiple processed pseudogenes of this gene dispersed throughout the genome. Alternative splicing results in multiple transcript variants.

Recommended Dilutions

WB 1:500 - 1:2000

IF/ICC 1:50 - 1:200

Immunogen Information

Gene ID

6128

Swiss Prot

Q02878

Immunogen

Recombinant fusion protein containing a sequence corresponding to amino acids 188-288 of human RPL6 (NP_000961.2).

Synonyms

L6; eL6; TXREB1; SHUJUN-2; TAXREB107; RPL6

Contact

 | 400-999-6126 | cn.market@abclonal.com.cn | www.abclonal.com.cn

Product Information

Source

Rabbit

Isotype

IgG

Purification

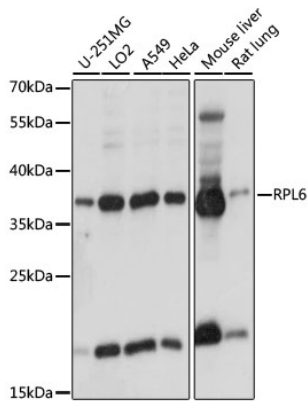
Affinity purification

Storage

Store at -20°C. Avoid freeze / thaw cycles.

Buffer: PBS with 0.01% thimerosal, 50% glycerol, pH7.3.

Validation Data



Western blot analysis of various lysates using RPL6 Rabbit pAb (A15094) at 1:1000 dilution.
Secondary antibody: HRP Goat Anti-Rabbit IgG (H+L) (AS014) at 1:10000 dilution.
Lysates/proteins: 25µg per lane.
Blocking buffer: 3% nonfat dry milk in TBST.
Detection: ECL Basic Kit (RM00020).
Exposure time: 1s.