

RPS26 Rabbit pAb

Catalog No.: A15096

Basic Information

Observed MW

15kDa

Calculated MW

13kDa

Category

Primary antibody

Applications

WB, ELISA

Cross-Reactivity

Human, Mouse, Rat

Background

This gene encodes a ribosomal protein that is a component of the 40S subunit. The protein belongs to the S26E family of ribosomal proteins. Mutations in this gene are found in Diamond-Blackfan anemia 10. There are multiple processed pseudogenes of this gene dispersed through the genome.

Recommended Dilutions

WB 1:500 - 1:2000

ELISA Recommended starting concentration is 1 µg/mL. Please optimize the concentration based on your specific assay requirements.

Immunogen Information

Gene ID

6231

Swiss Prot

P62854

Immunogen

Synthetic peptide. This information is considered to be commercially sensitive.

Synonyms

S26; eS26; DBA10; RPS26

Contact

☎ | 400-999-6126

✉ | cn.market@abclonal.com.cn

🌐 | www.abclonal.com.cn

Product Information

Source

Rabbit

Isotype

IgG

Purification

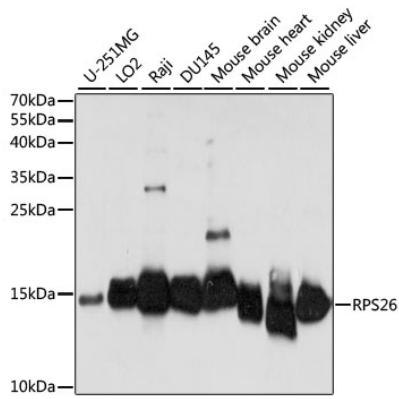
Affinity purification

Storage

Store at -20°C. Avoid freeze / thaw cycles.

Buffer: PBS with 0.01% thimerosal, 50% glycerol, pH 7.3.

Validation Data



Western blot analysis of various lysates using RPS26 Rabbit pAb (A15096) at 1:1000 dilution. Secondary antibody: HRP-conjugated Goat anti-Rabbit IgG (H+L) (AS014) at 1:10000 dilution. Lysates/proteins: 25µg per lane. Blocking buffer: 3% nonfat dry milk in TBST. Detection: ECL Basic Kit (RM00020). Exposure time: 30s.