

# SOX10 Rabbit pAb

Catalog No.: A15100

## Basic Information

### Observed MW

62kDa

### Calculated MW

50kDa

### Category

Primary antibody

### Applications

ELISA, WB, IHC-P, IF/ICC

### Cross-Reactivity

Human, Mouse, Rat

## Background

This gene encodes a member of the SOX (SRY-related HMG-box) family of transcription factors involved in the regulation of embryonic development and in the determination of the cell fate. The encoded protein may act as a transcriptional activator after forming a protein complex with other proteins. This protein acts as a nucleocytoplasmic shuttle protein and is important for neural crest and peripheral nervous system development. Mutations in this gene are associated with Waardenburg-Shah and Waardenburg-Hirschsprung disease.

## Recommended Dilutions

|        |                |
|--------|----------------|
| WB     | 1:500 - 1:1000 |
| IHC-P  | 1:50 - 1:200   |
| IF/ICC | 1:50 - 1:200   |

## Immunogen Information

### Gene ID

6663

### Swiss Prot

P56693

### Immunogen

Recombinant fusion protein containing a sequence corresponding to amino acids 270-360 of human SOX10 (NP\_008872.1).

### Synonyms

DOM; WS4; PCWH; WS2E; WS4C; SOX-10; SOX10

## Contact

|  |  |
|--|--|
|  | 400-999-6126   |
|  | cn.market@abclonal.com.cn                                    |
|  | <a href="http://www.abclonal.com.cn">www.abclonal.com.cn</a> |

## Product Information

### Source

Rabbit

### Isotype

IgG

### Purification

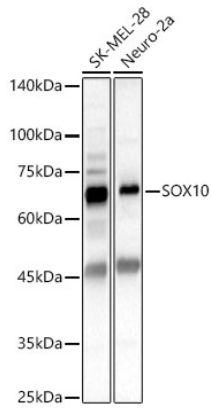
Affinity purification

### Storage

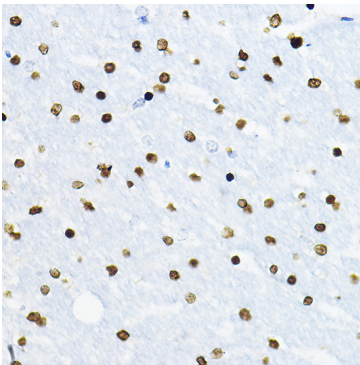
Store at -20°C. Avoid freeze / thaw cycles.

Buffer: PBS with 0.01% thimerosal, 50% glycerol, pH7.3.

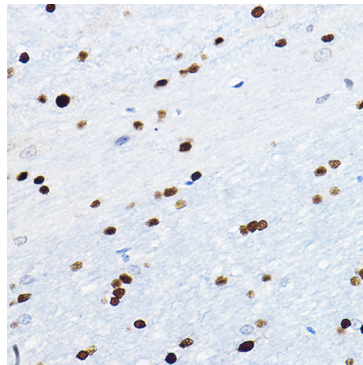
## Validation Data



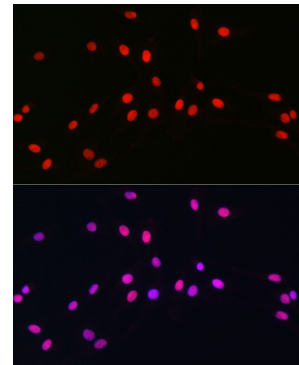
Western blot analysis of various lysates using SOX10 Rabbit pAb (A15100) at 1:600 dilution. Secondary antibody: HRP Goat Anti-Rabbit IgG (H+L) (AS014) at 1:10000 dilution. Lysates / proteins: 25 µg per lane. Blocking buffer: 3 % nonfat dry milk in TBST. Detection: ECL Basic Kit (RM00020). Exposure time: 20s.



Immunohistochemistry analysis of paraffin-embedded rat brain using SOX10 Rabbit pAb (A15100) at dilution of 1:100 (40x lens). Perform high pressure antigen retrieval with 10 mM citrate buffer pH 6.0 before commencing with IHC staining protocol.



Immunohistochemistry analysis of paraffin-embedded mouse brain using SOX10 Rabbit pAb (A15100) at dilution of 1:100 (40x lens). Perform high pressure antigen retrieval with 10 mM citrate buffer pH 6.0 before commencing with IHC staining protocol.



Immunofluorescence analysis of C6 cells using SOX10 Rabbit pAb (A15100) at dilution of 1:100 (40x lens). Secondary antibody: Cy3 Goat Anti-Rabbit IgG (H+L) (AS007) at 1:500 dilution. Blue: DAPI for nuclear staining.