

SPON1 Rabbit pAb

Catalog No.: A15130

Basic Information

Observed MW

91kDa

Calculated MW

91kDa

Category

Primary antibody

Applications

ELISA, WB

Cross-Reactivity

Mouse

Background

Predicted to be an extracellular matrix structural constituent. Predicted to be involved in cell adhesion. Predicted to act upstream of or within positive regulation of protein binding activity; positive regulation of protein processing; and regulation of amyloid precursor protein catabolic process. Located in extracellular space. Colocalizes with collagen-containing extracellular matrix.

Recommended Dilutions

WB 1:500 - 1:2000

Immunogen Information

Gene ID

10418

Swiss Prot

Q9HCB6

Immunogen

Recombinant fusion protein containing a sequence corresponding to amino acids 29-300 of human SPON1 (NP_006099.2).

Synonyms

f-spondin; VSGP/F-spondin; SPON1

Contact

☎ | 400-999-6126

✉ | cn.market@abclonal.com.cn

🌐 | www.abclonal.com.cn

Product Information

Source

Rabbit

Isotype

IgG

Purification

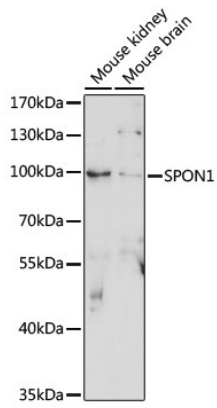
Affinity purification

Storage

Store at -20°C. Avoid freeze / thaw cycles.

Buffer: PBS with 0.01% thimerosal, 50% glycerol, pH7.3.

Validation Data



Western blot analysis of various lysates using SPON1 Rabbit pAb (A15130) at 1:1000 dilution.
Secondary antibody: HRP Goat Anti-Rabbit IgG (H+L) (AS014) at 1:10000 dilution.
Lysates/proteins: 25µg per lane.
Blocking buffer: 3% nonfat dry milk in TBST.
Detection: ECL Basic Kit (RM00020).
Exposure time: 90s.