

MEKK2 Rabbit pAb

Catalog No.: A15135

Basic Information

Observed MW

80kDa

Calculated MW

70kDa

Category

Primary antibody

Applications

ELISA, WB

Cross-Reactivity

Mouse

Background

The protein encoded by this gene is a member of serine/threonine protein kinase family. This kinase preferentially activates other kinases involved in the MAP kinase signaling pathway. This kinase has been shown to directly phosphorylate and activate I κ B kinases, and thus plays a role in NF- κ B signaling pathway. This kinase has also been found to bind and activate protein kinase C-related kinase 2, which suggests its involvement in a regulated signaling process.

Recommended Dilutions

WB 1:500 - 1:2000

Immunogen Information

Gene ID

10746

Swiss Prot

Q9Y2U5

Immunogen

Recombinant fusion protein containing a sequence corresponding to amino acids 1-180 of human MEKK2 (NP_006600.3).

Synonyms

MEKK2; MEKK2B

Contact

 | 400-999-6126

 | cn.market@abclonal.com.cn

 | www.abclonal.com.cn

Product Information

Source

Rabbit

Isotype

IgG

Purification

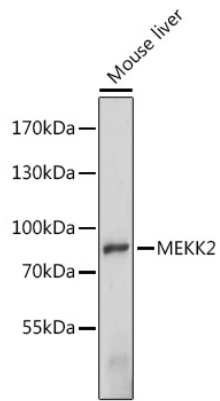
Affinity purification

Storage

Store at -20°C. Avoid freeze / thaw cycles.

Buffer: PBS with 0.01% thimerosal, 50% glycerol, pH7.3.

Validation Data



Western blot analysis of lysates from mouse liver, using MEKK2 Rabbit pAb (A15135) at 1:1000 dilution.
Secondary antibody: HRP Goat Anti-Rabbit IgG (H+L) (AS014) at 1:10000 dilution.
Lysates/proteins: 25µg per lane.
Blocking buffer: 3% nonfat dry milk in TBST.
Detection: ECL Enhanced Kit (RM00021).
Exposure time: 90s.