

TCF25 Rabbit pAb

Catalog No.: A15140

Basic Information

Observed MW

95kDa

Calculated MW

77kDa

Category

Primary antibody

Applications

ELISA, WB

Cross-Reactivity

Human

Background

TCF25 is a member of the basic helix-loop-helix (bHLH) family of transcription factors that are important in embryonic development (Steen and Lindholm, 2008 [PubMed 18068114]).

Recommended Dilutions

WB 1:500 - 1:2000

Immunogen Information

Gene ID

22980

Swiss Prot

Q9BQ70

Immunogen

Recombinant fusion protein containing a sequence corresponding to amino acids 1-300 of human TCF25 (NP_055787.1).

Synonyms

Hulp1; NULP1; FKSG26; PRO2620; hKIAA1049; TCF25

Contact

☎ | 400-999-6126

✉ | cn.market@abclonal.com.cn

🌐 | www.abclonal.com.cn

Product Information

Source

Rabbit

Isotype

IgG

Purification

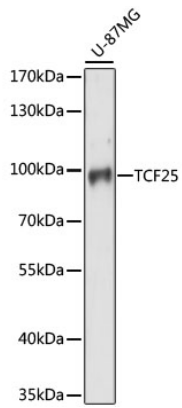
Affinity purification

Storage

Store at -20°C. Avoid freeze / thaw cycles.

Buffer: PBS with 0.01% thimerosal, 50% glycerol, pH7.3.

Validation Data



Western blot analysis of lysates from U-87MG cells, using TCF25 Rabbit pAb (A15140) at 1:1000 dilution.
Secondary antibody: HRP Goat Anti-Rabbit IgG (H+L) (AS014) at 1:10000 dilution.
Lysates/proteins: 25µg per lane.
Blocking buffer: 3% nonfat dry milk in TBST.
Detection: ECL Basic Kit (RM00020).
Exposure time: 30s.