

# TRAM1 Rabbit pAb

Catalog No.: A15142 **2 Publications**

## Basic Information

### Observed MW

45kDa

### Calculated MW

43kDa

### Category

Primary antibody

### Applications

ELISA, WB

### Cross-Reactivity

Human, Mouse

## Background

This gene encodes a multi-pass membrane protein that is part of the mammalian endoplasmic reticulum. The encoded protein influences glycosylation and facilitates the translocation of secretory proteins across the endoplasmic reticulum membrane by regulating which domains of the nascent polypeptide chain are visible to the cytosol during a translocational pause.

## Recommended Dilutions

WB 1:500 - 1:2000

## Immunogen Information

### Gene ID

23471

### Swiss Prot

Q15629

### Immunogen

Recombinant fusion protein containing a sequence corresponding to amino acids 305-374 of human TRAM1 (NP\_055109.1).

### Synonyms

TRAM; PNAS8; TRAMP; TRAM1

## Contact

 | 400-999-6126

 | [cn.market@abclonal.com.cn](mailto:cn.market@abclonal.com.cn)

 | [www.abclonal.com.cn](http://www.abclonal.com.cn)

## Product Information

### Source

Rabbit

### Isotype

IgG

### Purification

Affinity purification

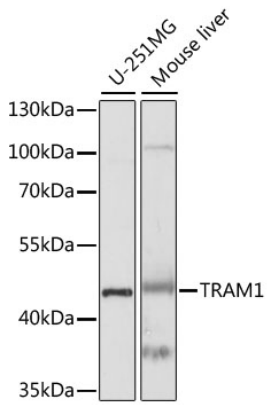
### Storage

Store at -20°C. Avoid freeze / thaw cycles.

Buffer: PBS with 0.01% thimerosal, 50% glycerol, pH7.3.

## Validation Data

---



Western blot analysis of various lysates using TRAM1 Rabbit pAb (A15142) at 1:1000 dilution.  
Secondary antibody: HRP Goat Anti-Rabbit IgG (H+L) (AS014) at 1:10000 dilution.  
Lysates/proteins: 25µg per lane.  
Blocking buffer: 3% nonfat dry milk in TBST.  
Detection: ECL Basic Kit (RM00020).  
Exposure time: 10s.