

KLHDC2 Rabbit pAb

Catalog No.: A15147

Basic Information

Observed MW

46kDa

Calculated MW

46kDa

Category

Primary antibody

Applications

ELISA, WB

Cross-Reactivity

Mouse, Rat

Background

Enables ubiquitin ligase-substrate adaptor activity. Involved in ubiquitin-dependent protein catabolic process via the C-end degron rule pathway. Located in nuclear body and nuclear membrane. Is active in Cul2-RING ubiquitin ligase complex and nucleus.

Recommended Dilutions

WB 1:500 - 1:1000

Immunogen Information

Gene ID

23588

Swiss Prot

Q9Y2U9

Immunogen

A synthetic peptide corresponding to a sequence within amino acids 306-406 of human KLHDC2 (NP_055130.1).

Synonyms

LCP; HCLP1; HCLP-1; KLHDC2

Contact

 | 400-999-6126

 | cn.market@abclonal.com.cn

 | www.abclonal.com.cn

Product Information

Source

Rabbit

Isotype

IgG

Purification

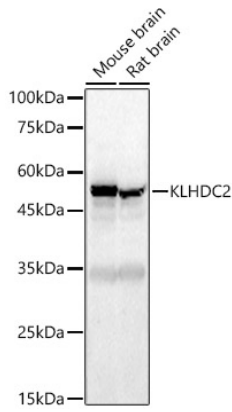
Affinity purification

Storage

Store at -20°C. Avoid freeze / thaw cycles.

Buffer: PBS with 0.05% proclin300, 50% glycerol, pH7.3.

Validation Data



Western blot analysis of various lysates, using KLHDC2 Rabbit pAb (A15147) at 1:800 dilution.
Secondary antibody: HRP Goat Anti-Rabbit IgG (H+L) (AS014) at 1:10000 dilution.
Lysates/proteins: 25µg per lane.
Blocking buffer: 3% nonfat dry milk in TBST.
Detection: ECL Basic Kit (RM00020).
Exposure time: 60s.