

# FOXB1 Rabbit pAb

Catalog No.: A15152

## Basic Information

### Observed MW

35kDa

### Calculated MW

35kDa

### Category

Primary antibody

### Applications

ELISA, WB

### Cross-Reactivity

Human

## Background

Enables sequence-specific double-stranded DNA binding activity. Predicted to be involved in several processes, including mammary gland development; nervous system development; and visual learning. Predicted to act upstream of or within spinal cord development; thalamus development; and urogenital system development. Predicted to be located in nucleus. Predicted to be part of chromatin.

## Recommended Dilutions

WB 1:500 - 1:2000

## Immunogen Information

### Gene ID

27023

### Swiss Prot

Q99853

### Immunogen

A synthetic peptide corresponding to a sequence within amino acids 200 to the C-terminus of human FOXB1 (NP\_036314.2).

### Synonyms

FKH5; HFKH-5; FOXB1

## Contact

☎ | 400-999-6126

✉ | [cn.market@abclonal.com.cn](mailto:cn.market@abclonal.com.cn)

🌐 | [www.abclonal.com.cn](http://www.abclonal.com.cn)

## Product Information

### Source

Rabbit

### Isotype

IgG

### Purification

Affinity purification

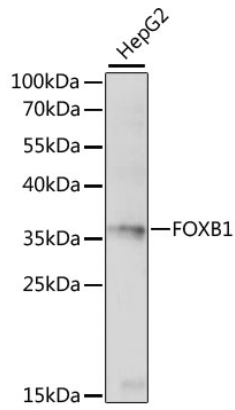
### Storage

Store at -20°C. Avoid freeze / thaw cycles.

Buffer: PBS with 0.01% thimerosal, 50% glycerol, pH7.3.

## Validation Data

---



Western blot analysis of lysates from HepG2 cells, using FOXB1 Rabbit pAb (A15152) at 1:1000 dilution.  
Secondary antibody: HRP Goat Anti-Rabbit IgG (H+L) (AS014) at 1:10000 dilution.  
Lysates/proteins: 25µg per lane.  
Blocking buffer: 3% nonfat dry milk in TBST.  
Detection: ECL Basic Kit (RM00020).  
Exposure time: 30s.