

GPR171 Rabbit pAb

Catalog No.: A15154

Basic Information

Observed MW

35kDa

Calculated MW

37kDa

Category

Primary antibody

Applications

ELISA, WB

Cross-Reactivity

Rat

Background

Predicted to enable G protein-coupled purinergic nucleotide receptor activity. Predicted to be involved in G protein-coupled receptor signaling pathway. Predicted to act upstream of or within negative regulation of myeloid cell differentiation. Predicted to be located in plasma membrane.

Recommended Dilutions

WB 1:500 - 1:2000

Immunogen Information

Gene ID

29909

Swiss Prot

O14626

Immunogen

A synthetic peptide corresponding to a sequence within amino acids 100-200 of human GPR171 (NP_037440.3).

Synonyms

H963; GPR171

Contact

☎ | 400-999-6126

✉ | cn.market@abclonal.com.cn

🌐 | www.abclonal.com.cn

Product Information

Source

Rabbit

Isotype

IgG

Purification

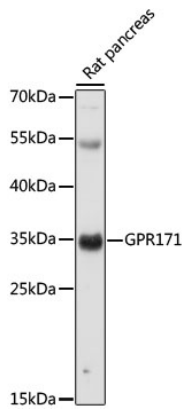
Affinity purification

Storage

Store at -20°C. Avoid freeze / thaw cycles.

Buffer: PBS with 0.01% thimerosal, 50% glycerol, pH7.3.

Validation Data



Western blot analysis of lysates from Rat pancreas, using GPR171 Rabbit pAb (A15154) at 1:1000 dilution.
Secondary antibody: HRP Goat Anti-Rabbit IgG (H+L) (AS014) at 1:10000 dilution.
Lysates/proteins: 25µg per lane.
Blocking buffer: 3% nonfat dry milk in TBST.
Detection: ECL Basic Kit (RM00020).
Exposure time: 60s.