

# SLC17A6 Rabbit pAb

Catalog No.: A15177 **3 Publications**

## Basic Information

### Observed MW

64 kDa

### Calculated MW

64 kDa

### Category

Primary antibody

### Applications

WB,IF-P,ELISA

### Cross-Reactivity

Human, Mouse, Rat

## Background

Predicted to enable L-glutamate transmembrane transporter activity and neurotransmitter transmembrane transporter activity. Involved in neurotransmitter loading into synaptic vesicle. Predicted to be located in synaptic vesicle. Predicted to be active in excitatory synapse. Predicted to be integral component of synaptic vesicle membrane.

## Recommended Dilutions

**WB** 1:500 - 1:5000

**IF-P** 1:50 - 1:200

**ELISA** Recommended starting concentration is 1 µg/mL. Please optimize the concentration based on your specific assay requirements.

## Immunogen Information

### Gene ID

57084

### Swiss Prot

Q9P2U8

### Immunogen

Synthetic peptide. This information is considered to be commercially sensitive.

### Synonyms

DNPI; VGLUT2; SLC17A6

## Contact

☎ | 400-999-6126

✉ | [cn.market@abclonal.com.cn](mailto:cn.market@abclonal.com.cn)

🌐 | [www.abclonal.com.cn](http://www.abclonal.com.cn)

## Product Information

### Source

Rabbit

### Isotype

IgG

### Purification

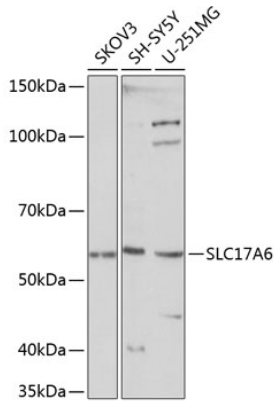
Affinity purification

### Storage

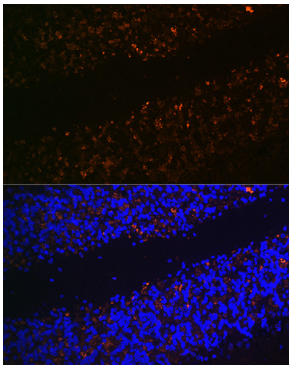
Store at -20°C. Avoid freeze / thaw cycles.

Buffer: PBS containing 50% glycerol, preserved with proclin300 or sodium azide (as specified on the Certificate of Analysis), pH 7.3.

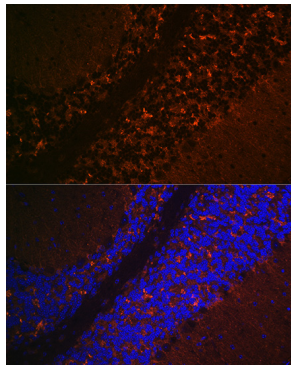
## Validation Data



Western blot analysis of various lysates using SLC17A6 Rabbit pAb (A15177) at 1:1000 dilution. Secondary antibody: HRP-conjugated Goat anti-Rabbit IgG (H+L) (AS014) at 1:10000 dilution. Lysates/proteins: 25µg per lane. Blocking buffer: 3% nonfat dry milk in TBST. Detection: ECL Basic Kit (RM00020). Exposure time: 10s.



Immunofluorescence analysis of paraffin-embedded rat brain using SLC17A6 Rabbit pAb (A15177) at dilution of 1:100 (40x lens). Secondary antibody: Cy3-conjugated Goat anti-Rabbit IgG (H+L) (AS007) at 1:500 dilution. Blue: DAPI for nuclear staining.



Immunofluorescence analysis of paraffin-embedded mouse brain using SLC17A6 Rabbit pAb (A15177) at dilution of 1:100 (40x lens). Secondary antibody: Cy3-conjugated Goat anti-Rabbit IgG (H+L) (AS007) at 1:500 dilution. Blue: DAPI for nuclear staining.