

# Rnf170 Rabbit pAb

Catalog No.: A15196

## Basic Information

### Observed MW

28kDa

### Calculated MW

16kDa/24kDa/28kDa/33kDa

### Category

Primary antibody

### Applications

ELISA, WB

### Cross-Reactivity

Mouse

## Background

Predicted to enable metal ion binding activity and ubiquitin protein ligase activity. Predicted to be located in endoplasmic reticulum and membrane. Predicted to be integral component of membrane. Used to study hereditary ataxia. Human ortholog(s) of this gene implicated in autosomal dominant sensory ataxia 1. Orthologous to human RNF170 (ring finger protein 170).

## Recommended Dilutions

WB 1:500 - 1:2000

## Immunogen Information

### Gene ID

77733

### Swiss Prot

### Immunogen

Recombinant fusion protein containing a sequence corresponding to amino acids 1-200 of mouse Rnf170 (NP\_084241.1).

### Synonyms

6720407G21Rik; Rnf170

## Contact

 | 400-999-6126

 | [cn.market@abclonal.com.cn](mailto:cn.market@abclonal.com.cn)

 | [www.abclonal.com.cn](http://www.abclonal.com.cn)

## Product Information

### Source

Rabbit

### Isotype

IgG

### Purification

Affinity purification

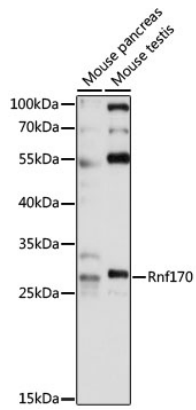
### Storage

Store at -20°C. Avoid freeze / thaw cycles.

Buffer: PBS with 0.01% thimerosal, 50% glycerol, pH7.3.

## Validation Data

---



Western blot analysis of various lysates using Rnf170 Rabbit pAb (A15196) at 1:1000 dilution.  
Secondary antibody: HRP Goat Anti-Rabbit IgG (H+L) (AS014) at 1:10000 dilution.  
Lysates/proteins: 25µg per lane.  
Blocking buffer: 3% nonfat dry milk in TBST.  
Detection: ECL Basic Kit (RM00020).  
Exposure time: 30s.