

ZDHHC18 Rabbit pAb

Catalog No.: A15199 **1 Publications**

Basic Information

Observed MW

42kDa

Calculated MW

42kDa

Category

Primary antibody

Applications

ELISA, WB, IHC-P

Cross-Reactivity

Human, Mouse, Rat

Background

Enables palmitoyltransferase activity. Involved in peptidyl-L-cysteine S-palmitoylation. Located in Golgi apparatus.

Recommended Dilutions

WB	1:500 - 1:2000
IHC-P	1:50 - 1:200

Immunogen Information

Gene ID

84243

Swiss Prot

Q9NUE0

Immunogen

Recombinant fusion protein containing a sequence corresponding to amino acids 301-388 of human ZDHHC18 (NP_115659.1).

Synonyms

DHHC18; DHHC-18; ZDHHC18

Contact

 | 400-999-6126

 | cn.market@abclonal.com.cn

 | www.abclonal.com.cn

Product Information

Source

Rabbit

Isotype

IgG

Purification

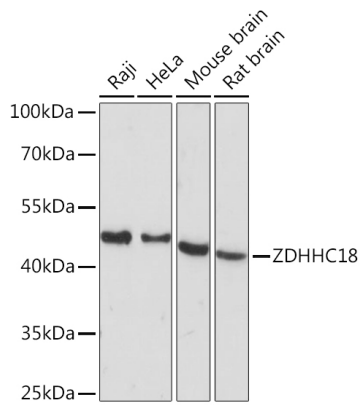
Affinity purification

Storage

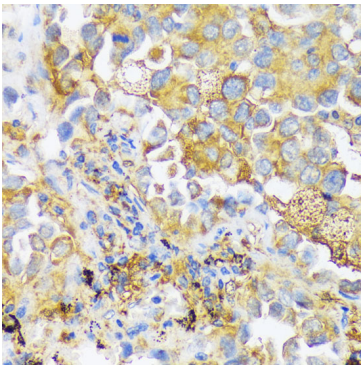
Store at -20°C. Avoid freeze / thaw cycles.

Buffer: PBS with 0.01% thimerosal, 50% glycerol, pH7.3.

Validation Data



Western blot analysis of various lysates using ZDHHC18 Rabbit pAb (A15199) at 1:1000 dilution.
Secondary antibody: HRP Goat Anti-Rabbit IgG (H+L) (AS014) at 1:10000 dilution.
Lysates/proteins: 25µg per lane.
Blocking buffer: 3% nonfat dry milk in TBST.
Detection: ECL Basic Kit (RM00020).
Exposure time: 60s.



Immunohistochemistry analysis of paraffin-embedded human lung cancer using ZDHHC18 Rabbit pAb (A15199) at dilution of 1:100 (40x lens). Perform microwave antigen retrieval with 10 mM PBS buffer pH 7.2 before commencing with IHC staining protocol.