

CHRDL1 Rabbit pAb

Catalog No.: A15204

Basic Information

Observed MW

51kDa

Calculated MW

52kDa

Category

Primary antibody

Applications

ELISA, WB

Cross-Reactivity

Human, Mouse

Background

This gene encodes an antagonist of bone morphogenetic protein 4. The encoded protein may play a role in topographic retinotectal projection and in the regulation of retinal angiogenesis in response to hypoxia. Alternatively spliced transcript variants encoding different isoforms have been described.

Recommended Dilutions

WB 1:500 - 1:2000

Immunogen Information

Gene ID

91851

Swiss Prot

Q9BU40

Immunogen

Recombinant fusion protein containing a sequence corresponding to amino acids 289-458 of human CHRDL1 (NP_001137453.1).

Synonyms

CHL; MGC1; MGCN; VOPT; NRLN1; dA141H5.1; CHRDL1

Contact

☎ | 400-999-6126

✉ | cn.market@abclonal.com.cn

🌐 | www.abclonal.com.cn

Product Information

Source

Rabbit

Isotype

IgG

Purification

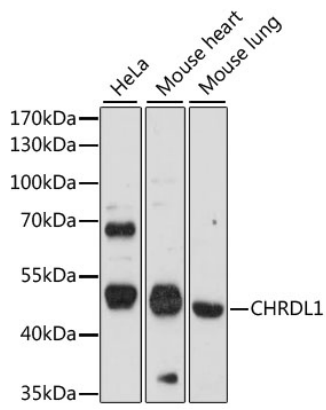
Affinity purification

Storage

Store at -20°C. Avoid freeze / thaw cycles.

Buffer: PBS with 0.01% thimerosal, 50% glycerol, pH7.3.

Validation Data



Western blot analysis of various lysates using CHRDL1 Rabbit pAb (A15204) at 1:1000 dilution.
Secondary antibody: HRP Goat Anti-Rabbit IgG (H+L) (AS014) at 1:10000 dilution.
Lysates/proteins: 25 μ g per lane.
Blocking buffer: 3% nonfat dry milk in TBST.
Detection: ECL Basic Kit (RM00020).
Exposure time: 90s.