

# PLD4 Rabbit pAb

Catalog No.: A15207

## Basic Information

### Observed MW

64kDa

### Calculated MW

56kDa

### Category

Primary antibody

### Applications

ELISA, WB

### Cross-Reactivity

Human, Rat

## Background

Predicted to enable single-stranded DNA 5'-3' exodeoxyribonuclease activity. Predicted to be involved in hematopoietic progenitor cell differentiation; phagocytosis; and regulation of cytokine production involved in inflammatory response. Predicted to be located in early endosome and endoplasmic reticulum membrane. Predicted to be active in several cellular components, including endoplasmic reticulum; phagocytic vesicle; and trans-Golgi network membrane.

## Recommended Dilutions

WB 1:500 - 1:2000

## Immunogen Information

### Gene ID

122618

### Swiss Prot

Q96BZ4

### Immunogen

Recombinant fusion protein containing a sequence corresponding to amino acids 52-200 of human PLD4 (NP\_620145.2).

### Synonyms

C14orf175; PLD4

## Contact

 | 400-999-6126

 | [cn.market@abclonal.com.cn](mailto:cn.market@abclonal.com.cn)

 | [www.abclonal.com.cn](http://www.abclonal.com.cn)

## Product Information

### Source

Rabbit

### Isotype

IgG

### Purification

Affinity purification

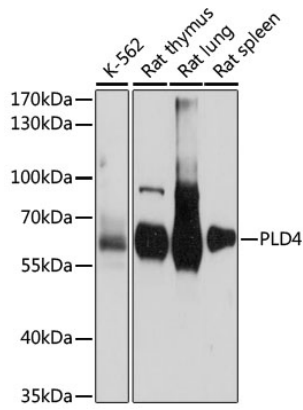
### Storage

Store at -20°C. Avoid freeze / thaw cycles.

Buffer: PBS with 0.01% thimerosal, 50% glycerol, pH7.3.

## Validation Data

---



Western blot analysis of various lysates using PLD4 Rabbit pAb (A15207) at 1:1000 dilution.  
Secondary antibody: HRP Goat Anti-Rabbit IgG (H+L) (AS014) at 1:10000 dilution.  
Lysates/proteins: 25µg per lane.  
Blocking buffer: 3% nonfat dry milk in TBST.  
Detection: ECL Basic Kit (RM00020).  
Exposure time: 15s.