

LYPLAL1 Rabbit pAb

Catalog No.: A15209

Basic Information

Observed MW

28kDa

Calculated MW

26kDa

Category

Primary antibody

Applications

ELISA, WB

Cross-Reactivity

Mouse

Background

Predicted to enable carboxylic ester hydrolase activity and palmitoyl-(protein) hydrolase activity. Predicted to be involved in protein depalmitoylation. Predicted to act upstream of or within negative regulation of Golgi to plasma membrane protein transport. Located in cytosol.

Recommended Dilutions

WB 1:500 - 1:2000

Immunogen Information

Gene ID

127018

Swiss Prot

Q5VWZ2

Immunogen

A synthetic peptide corresponding to a sequence within amino acids 1-100 of human LYPLAL1 (NP_620149.2).

Synonyms

Q96AV0; LYPLAL1

Contact

 | 400-999-6126

 | cn.market@abclonal.com.cn

 | www.abclonal.com.cn

Product Information

Source

Rabbit

Isotype

IgG

Purification

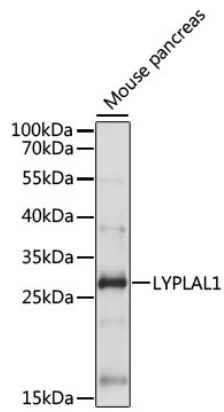
Affinity purification

Storage

Store at -20°C. Avoid freeze / thaw cycles.

Buffer: PBS with 0.01% thimerosal, 50% glycerol, pH7.3.

Validation Data



Western blot analysis of lysates from Mouse pancreas, using LYPLAL1 Rabbit pAb (A15209) at 1:1000 dilution.

Secondary antibody: HRP Goat Anti-Rabbit IgG (H+L) (AS014) at 1:10000 dilution.

Lysates/proteins: 25µg per lane.

Blocking buffer: 3% nonfat dry milk in TBST.

Detection: ECL Basic Kit (RM00020).

Exposure time: 30s.