

GIMAP8 Rabbit pAb

Catalog No.: A15213

Basic Information

Observed MW

75kDa

Calculated MW

75kDa

Category

Primary antibody

Applications

ELISA, WB

Cross-Reactivity

Human, Mouse, Rat

Background

This gene encodes a protein belonging to the GTP-binding superfamily and to the immun-associated nucleotide (IAN) subfamily of nucleotide-binding proteins. In humans, the IAN subfamily genes are located in a cluster at 7q36.1.

Recommended Dilutions

WB 1:500 - 1:2000

Immunogen Information

Gene ID

155038

Swiss Prot

Q8ND71

Immunogen

Recombinant fusion protein containing a sequence corresponding to amino acids 1-300 of human GIMAP8 (NP_783161.1).

Synonyms

IAN6; IAN9; IANT; IAN-9; GIMAP8

Contact

 | 400-999-6126

 | cn.market@abclonal.com.cn

 | www.abclonal.com.cn

Product Information

Source

Rabbit

Isotype

IgG

Purification

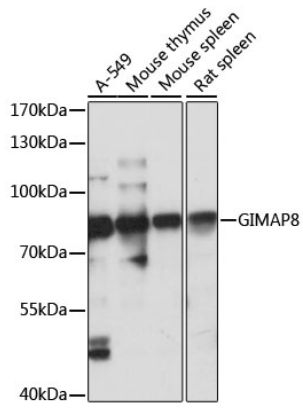
Affinity purification

Storage

Store at -20°C. Avoid freeze / thaw cycles.

Buffer: PBS with 0.01% thimerosal, 50% glycerol, pH7.3.

Validation Data



Western blot analysis of various lysates using GIMAP8 Rabbit pAb (A15213) at 1:1000 dilution.
Secondary antibody: HRP Goat Anti-Rabbit IgG (H+L) (AS014) at 1:10000 dilution.
Lysates/proteins: 25 μ g per lane.
Blocking buffer: 3% nonfat dry milk in TBST.
Detection: ECL Basic Kit (RM00020).
Exposure time: 10s.