

NAIF1 Rabbit pAb

Catalog No.: A15217

Basic Information

Observed MW

35kDa

Calculated MW

35kDa

Category

Primary antibody

Applications

ELISA, WB

Cross-Reactivity

Human, Mouse, Rat

Background

Involved in negative regulation of cell growth and regulation of mitochondrial membrane permeability involved in apoptotic process. Located in cytosol; nucleoplasm; and plasma membrane.

Recommended Dilutions

WB 1:500 - 1:2000

Immunogen Information

Gene ID

203245

Swiss Prot

Q69Y17

Immunogen

Recombinant fusion protein containing a sequence corresponding to amino acids 1-110 of human NAIF1 (NP_931045.1).

Synonyms

C9orf90; bA379C10.2; NAIF1

Contact

☎ | 400-999-6126

✉ | cn.market@abclonal.com.cn

🌐 | www.abclonal.com.cn

Product Information

Source

Rabbit

Isotype

IgG

Purification

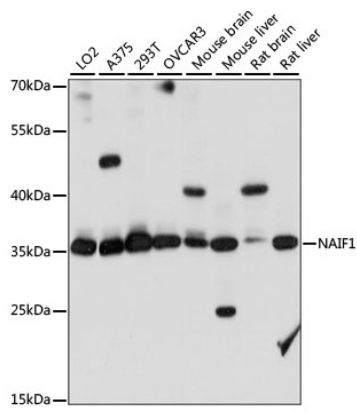
Affinity purification

Storage

Store at -20°C. Avoid freeze / thaw cycles.

Buffer: PBS with 0.01% thimerosal, 50% glycerol, pH7.3.

Validation Data



Western blot analysis of various lysates using NAIF1 Rabbit pAb (A15217) at 1:1000 dilution.
Secondary antibody: HRP Goat Anti-Rabbit IgG (H+L) (AS014) at 1:10000 dilution.
Lysates/proteins: 25µg per lane.
Blocking buffer: 3% nonfat dry milk in TBST.
Detection: ECL Basic Kit (RM00020).
Exposure time: 10S.