

SLC24A5 Rabbit pAb

Catalog No.: A15223

Basic Information

Observed MW

Calculated MW
55kDa

Category
Primary antibody

Applications
ELISA,IF/ICC

Cross-Reactivity
Human

Background

This gene is a member of the potassium-dependent sodium/calcium exchanger family and encodes an intracellular membrane protein with 2 large hydrophilic loops and 2 sets of multiple transmembrane-spanning segments. Sequence variation in this gene has been associated with differences in skin pigmentation.

Recommended Dilutions

IF/ICC 1:50 - 1:200

Immunogen Information

Gene ID 283652	Swiss Prot Q71RS6
--------------------------	-----------------------------

Immunogen

Recombinant fusion protein containing a sequence corresponding to amino acids 220-300 of human SLC24A5 (NP_995322.1).

Synonyms

JSX; OCA6; NCKX5; SHEP4; SLC24A5

Contact

	400-999-6126
	cn.market@abclonal.com.cn
	www.abclonal.com.cn

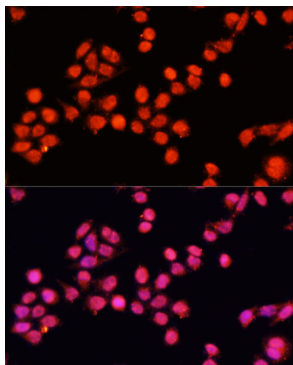
Product Information

Source Rabbit	Isotype IgG	Purification Affinity purification
-------------------------	-----------------------	----------------------------------------------

Storage

Store at -20°C. Avoid freeze / thaw cycles.
Buffer: PBS with 0.01% thimerosal,50% glycerol,pH7.3.

Validation Data



Immunofluorescence analysis of HeLa cells using SLC24A5 Rabbit pAb (A15223) at dilution of 1:100 (40x lens). Secondary antibody: Cy3 Goat Anti-Rabbit IgG (H+L) (AS007) at 1:500 dilution. Blue: DAPI for nuclear staining.