

# PLA2G4D Rabbit pAb

Catalog No.: A15224

## Basic Information

### Observed MW

### Calculated MW

92kDa

### Category

Primary antibody

### Applications

ELISA,IF/ICC

### Cross-Reactivity

Human

## Background

The phospholipase A2 enzyme family, including PLA2G4D, catalyze the hydrolysis of glycerophospholipids at the sn-2 position and then liberate free fatty acids and lysophospholipids (Chiba et al., 2004 [PubMed 14709560]).

## Recommended Dilutions

IF/ICC 1:50 - 1:200

## Immunogen Information

### Gene ID

283748

### Swiss Prot

Q86XPO

### Immunogen

Recombinant fusion protein containing a sequence corresponding to amino acids 510-680 of human PLA2G4D (NP\_828848.3).

### Synonyms

cPLA2delta; PLA2G4D

## Contact

 | 400-999-6126

 | [cn.market@abclonal.com.cn](mailto:cn.market@abclonal.com.cn)

 | [www.abclonal.com.cn](http://www.abclonal.com.cn)

## Product Information

### Source

Rabbit

### Isotype

IgG

### Purification

Affinity purification

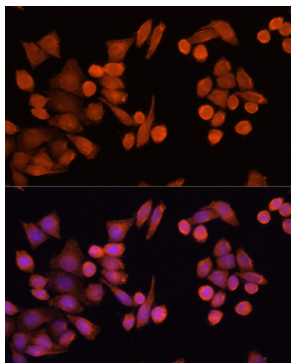
### Storage

Store at -20°C. Avoid freeze / thaw cycles.

Buffer: PBS with 0.01% thimerosal,50% glycerol,pH7.3.

## Validation Data

---



Immunofluorescence analysis of HeLa cells using PLA2G4D Rabbit pAb (A15224) at dilution of 1:100 (40x lens). Secondary antibody: Cy3 Goat Anti-Rabbit IgG (H+L) (AS007) at 1:500 dilution. Blue: DAPI for nuclear staining.