

ligp1 Rabbit pAb

Catalog No.: A15226 **1 Publications**

Basic Information

Observed MW

48kDa

Calculated MW

47kDa

Category

Primary antibody

Applications

ELISA, WB

Cross-Reactivity

Mouse

Background

Enables GTPase activity; guanyl ribonucleotide binding activity; and identical protein binding activity. Involved in defense response to Gram-negative bacterium; defense response to protozoan; and regulation of autophagy. Acts upstream of or within cellular response to interferon-beta and response to bacterium. Located in endoplasmic reticulum membrane and symbiont-containing vacuole membrane. Is expressed in several structures, including cardiovascular system; foregut; genitourinary system; limb; and respiratory system.

Recommended Dilutions

WB 1:500 - 1:1000

Immunogen Information

Gene ID

60440

Swiss Prot

Immunogen

A synthetic peptide corresponding to a sequence within amino acids 150-250 of mouse ligp1 (NP_068564.4).

Synonyms

ligp; Irga6; lfgga1; 2900074L10Rik; ligp1

Contact

☎ | 400-999-6126

✉ | cn.market@abclonal.com.cn

🌐 | www.abclonal.com.cn

Product Information

Source

Rabbit

Isotype

IgG

Purification

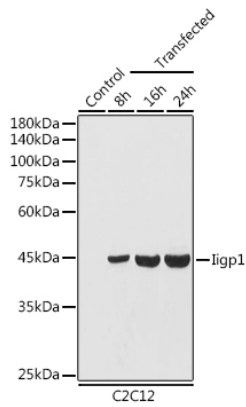
Affinity purification

Storage

Store at -20°C. Avoid freeze / thaw cycles.

Buffer: PBS with 0.05% proclin300, 50% glycerol, pH7.3.

Validation Data



Western blot analysis of extracts of C2C12 cells, using Iigp1 antibody (A15226) at 1:1000 dilution.
Secondary antibody: HRP Goat Anti-Rabbit IgG (H+L) (AS014) at 1:10000 dilution.
Lysates/proteins: 25µg per lane.
Blocking buffer: 3% nonfat dry milk in TBST.
Detection: ECL Basic Kit (RM00020).
Exposure time: 30s.