

# SIK1 Rabbit pAb

Catalog No.: A15247

## Basic Information

### Observed MW

80kDa

### Calculated MW

85kDa

### Category

Primary antibody

### Applications

ELISA, WB

### Cross-Reactivity

Human, Mouse

## Background

This gene encodes a serine/threonine protein kinase that contains a ubiquitin-associated (UBA) domain. The encoded protein is a member of the adenosine monophosphate-activated kinase (AMPK) subfamily of kinases that play a role in conserved signal transduction pathways. A mutation in this gene is associated with early infantile epileptic encephalopathy 30.

## Recommended Dilutions

WB 1:500 - 1:1000

## Immunogen Information

### Gene ID

150094

### Swiss Prot

P57059

### Immunogen

A synthetic peptide corresponding to a sequence within amino acids 1-100 of human SIK1 (NP\_775490.2).

### Synonyms

MSK; SIK; DEE30; SIK-1; SIK1B; SNF1LK; SIK1

## Contact

☎ | 400-999-6126

✉ | [cn.market@abclonal.com.cn](mailto:cn.market@abclonal.com.cn)

🌐 | [www.abclonal.com.cn](http://www.abclonal.com.cn)

## Product Information

### Source

Rabbit

### Isotype

IgG

### Purification

Affinity purification

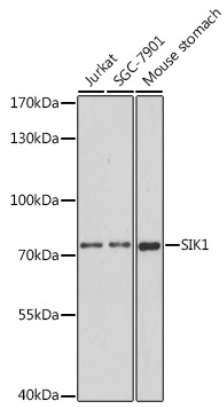
### Storage

Store at -20°C. Avoid freeze / thaw cycles.

Buffer: PBS with 0.01% thimerosal, 50% glycerol, pH7.3.

## Validation Data

---



Western blot analysis of various lysates using SIK1 Rabbit pAb (A15247) at 1:1000 dilution.  
Secondary antibody: HRP Goat Anti-Rabbit IgG (H+L) (AS014) at 1:10000 dilution.  
Lysates/proteins: 25µg per lane.  
Blocking buffer: 3% nonfat dry milk in TBST.  
Detection: ECL Basic Kit (RM00020).  
Exposure time: 150s.