

SASH1 Rabbit pAb

Catalog No.: A15248

Basic Information

Observed MW

170kDa

Calculated MW

137kDa

Category

Primary antibody

Applications

ELISA, WB

Cross-Reactivity

Human, Mouse

Background

This gene encodes a scaffold protein involved in the TLR4 signaling pathway that may stimulate cytokine production and endothelial cell migration in response to invading pathogens. The encoded protein has also been described as a potential tumor suppressor that may negatively regulate proliferation, apoptosis, and invasion of cancer cells, and reduced expression of this gene has been observed in multiple human cancers. Mutations in this gene may be associated with abnormal skin pigmentation in human patients.

Recommended Dilutions

WB 1:500 - 1:2000

Immunogen Information

Gene ID

23328

Swiss Prot

O94885

Immunogen

Recombinant fusion protein containing a sequence corresponding to amino acids 1-300 of human SASH1 (NP_056093.3).

Synonyms

DUH; DUH1; CAPOK; SH3D6A; dj323M4.1; SASH1

Contact

☎ | 400-999-6126

✉ | cn.market@abclonal.com.cn

🌐 | www.abclonal.com.cn

Product Information

Source

Rabbit

Isotype

IgG

Purification

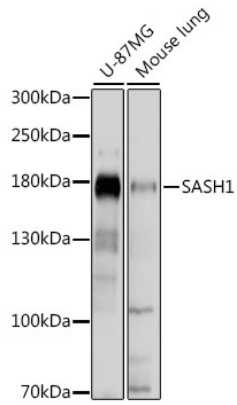
Affinity purification

Storage

Store at -20°C. Avoid freeze / thaw cycles.

Buffer: PBS with 0.01% thimerosal, 50% glycerol, pH7.3.

Validation Data



Western blot analysis of various lysates using SASH1 Rabbit pAb (A15248) at 1:1000 dilution.
Secondary antibody: HRP Goat Anti-Rabbit IgG (H+L) (AS014) at 1:10000 dilution.
Lysates/proteins: 25µg per lane.
Blocking buffer: 3% nonfat dry milk in TBST.
Detection: ECL Basic Kit (RM00020).
Exposure time: 5s.