

GTF2E1 Rabbit pAb

Catalog No.: A15275

Basic Information

Observed MW

60kDa

Calculated MW

49kDa

Category

Primary antibody

Applications

ELISA, WB, IF/ICC

Cross-Reactivity

Human, Mouse, Rat

Background

Enables RNA polymerase II general transcription initiation factor activity. Involved in transcription by RNA polymerase II. Located in cytosol and nucleoplasm. Part of transcription factor TFIID complex and transcription preinitiation complex.

Recommended Dilutions

WB 1:200 - 1:2000

IF/ICC 1:50 - 1:200

Immunogen Information

Gene ID

2960

Swiss Prot

P29083

Immunogen

Recombinant fusion protein containing a sequence corresponding to amino acids 230-439 of human GTF2E1 (NP_005504.2).

Synonyms

FE; TF2E1; TFIIE-A; GTF2E1

Contact

☎ | 400-999-6126

✉ | cn.market@abclonal.com.cn

🌐 | www.abclonal.com.cn

Product Information

Source

Rabbit

Isotype

IgG

Purification

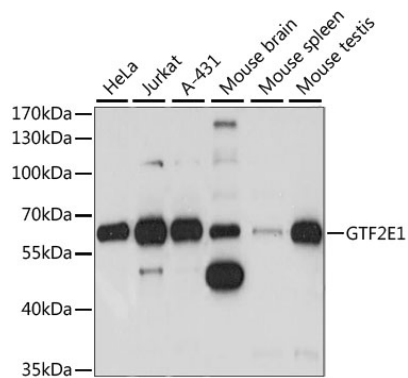
Affinity purification

Storage

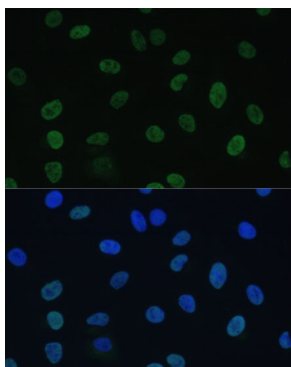
Store at -20°C. Avoid freeze / thaw cycles.

Buffer: PBS with 0.01% thimerosal, 50% glycerol, pH7.3.

Validation Data



Western blot analysis of various lysates using GTF2E1 Rabbit pAb (A15275) at 1:1000 dilution.
Secondary antibody: HRP Goat Anti-Rabbit IgG (H+L) (AS014) at 1:10000 dilution.
Lysates/proteins: 25µg per lane.
Blocking buffer: 3% nonfat dry milk in TBST.
Detection: ECL Basic Kit (RM00020).
Exposure time: 5S.



Immunofluorescence analysis of U-2 OS cells using GTF2E1 Rabbit pAb (A15275) at dilution of 1:100 (40x lens). Secondary antibody: Cy3 Goat Anti-Rabbit IgG (H+L) (AS007) at 1:500 dilution. Blue: DAPI for nuclear staining.