

# Guanylyl Cyclase beta 1 (GUCY1B3) Rabbit pAb

Catalog No.: A15276 **1 Publications**

## Basic Information

### Observed MW

70kDa

### Calculated MW

71kDa

### Category

Primary antibody

### Applications

ELISA, WB

### Cross-Reactivity

Human, Mouse, Rat

## Background

This gene encodes the beta subunit of the soluble guanylate cyclase (sGC), which catalyzes the conversion of GTP (guanosine triphosphate) to cGMP (cyclic guanosine monophosphate). The encoded protein contains an HNOX domain, which serves as a receptor for ligands such as nitric oxide, oxygen and nitrovasodilator drugs. Alternative splicing results in multiple transcript variants.

## Recommended Dilutions

WB 1:200 - 1:2000

## Immunogen Information

### Gene ID

2983

### Swiss Prot

Q02153

### Immunogen

Recombinant fusion protein containing a sequence corresponding to amino acids 1-250 of human Guanylyl Cyclase beta 1 (Guanylyl Cyclase beta 1 (GUCY1B3)) (NP\_000848.1).

### Synonyms

GUCB3; GC-SB3; GUC1B3; GUCSB3; GUCY1B3; GC-S-beta-1; Guanylyl Cyclase beta 1 (GUCY1B3)

## Contact

☎ | 400-999-6126

✉ | [cn.market@abclonal.com.cn](mailto:cn.market@abclonal.com.cn)

🌐 | [www.abclonal.com.cn](http://www.abclonal.com.cn)

## Product Information

### Source

Rabbit

### Isotype

IgG

### Purification

Affinity purification

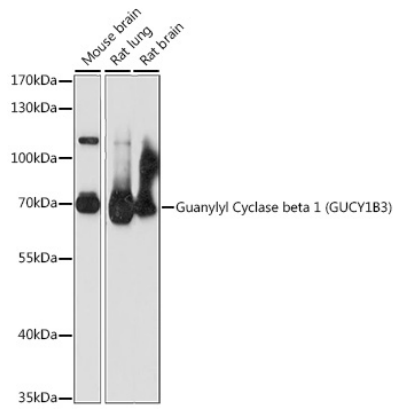
### Storage

Store at -20°C. Avoid freeze / thaw cycles.

Buffer: PBS with 0.01% thimerosal, 50% glycerol, pH7.3.

## Validation Data

---



Western blot analysis of various lysates using Guanylyl Cyclase beta 1 (GUCY1B3) Rabbit pAb (A15276) at 1:1000 dilution.

Secondary antibody: HRP Goat Anti-Rabbit IgG (H+L) (AS014) at 1:10000 dilution.

Lysates/proteins: 25µg per lane.

Blocking buffer: 3% nonfat dry milk in TBST.

Detection: ECL Basic Kit (RM00020).

Exposure time: 30S.