

KCNMA1 Rabbit pAb

Catalog No.: A15283 **1 Publications**

Basic Information

Observed MW

137kDa

Calculated MW

138kDa

Category

Primary antibody

Applications

WB,ELISA

Cross-Reactivity

Rat

Background

This gene encodes the alpha subunit of calcium-activated BK channel. The encoded protein is involved in several physiological processes including smooth muscle contraction, neurotransmitter release and neuronal excitability. Mutations in this gene are associated with a spectrum of neurological disorders including Paroxysmal Nonkinesigenic Dyskinesia 3, Idiopathic Generalized Epilepsy 16 and Liang-Wang syndrome.

Recommended Dilutions

WB 1:200 - 1:2000

ELISA Recommended starting concentration is 1 µg/mL. Please optimize the concentration based on your specific assay requirements.

Immunogen Information

Gene ID

3778

Swiss Prot

Q12791

Immunogen

Synthetic peptide. This information is considered to be commercially sensitive.

Synonyms

SLO; BKTM; SLO1; hSlo; IEG16; LIWAS; MaxiK; PNKD3; SAKCA; mSLO1; CADEDS; KCa1.1; SLO-ALPHA; bA205K10.1; KCNMA1

Contact

☎ | 400-999-6126

✉ | cn.market@abclonal.com.cn

🌐 | www.abclonal.com.cn

Product Information

Source

Rabbit

Isotype

IgG

Purification

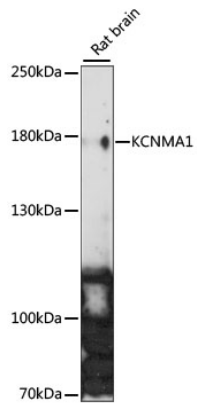
Affinity purification

Storage

Store at -20°C. Avoid freeze / thaw cycles.

Buffer: PBS with 0.01% thimerosal, 50% glycerol, pH7.3.

Validation Data



Western blot analysis of lysates from Rat brain, using KCNMA1 Rabbit pAb (A15283) at 1:1000 dilution.
Secondary antibody: HRP-conjugated Goat anti-Rabbit IgG (H+L) (AS014) at 1:10000 dilution.
Lysates/proteins: 25 μ g per lane.
Blocking buffer: 3% nonfat dry milk in TBST.
Detection: ECL Enhanced Kit (RM00021).
Exposure time: 90s.