

# KIF5B Rabbit pAb

Catalog No.: A15284

## Basic Information

### Observed MW

110kDa

### Calculated MW

110kDa

### Category

Primary antibody

### Applications

ELISA, WB, IHC-P, IF/ICC

### Cross-Reactivity

Human, Mouse, Rat

## Background

Enables identical protein binding activity; microtubule binding activity; and microtubule motor activity. Involved in several processes, including lysosome localization; natural killer cell mediated cytotoxicity; and positive regulation of protein localization to plasma membrane. Located in centriolar satellite; cytosol; and vesicle.

## Recommended Dilutions

WB	1:500 - 1:1000
IHC-P	1:50 - 1:100
IF/ICC	1:50 - 1:200

## Immunogen Information

### Gene ID

3799

### Swiss Prot

P33176

### Immunogen

Recombinant fusion protein containing a sequence corresponding to amino acids 650-770 of human KIF5B (NP\_004512.1).

### Synonyms

KNS; KINH; KNS1; UKHC; HEL-S-61; KIF5B

## Contact

☎	400-999-6126
✉	<a href="mailto:cn.market@abclonal.com.cn">cn.market@abclonal.com.cn</a>
🌐	<a href="http://www.abclonal.com.cn">www.abclonal.com.cn</a>

## Product Information

### Source

Rabbit

### Isotype

IgG

### Purification

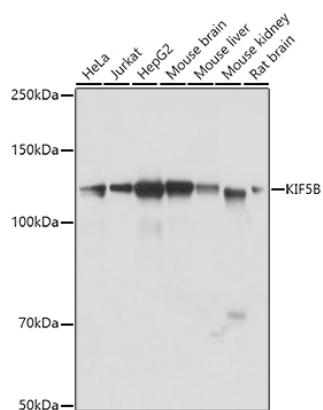
Affinity purification

### Storage

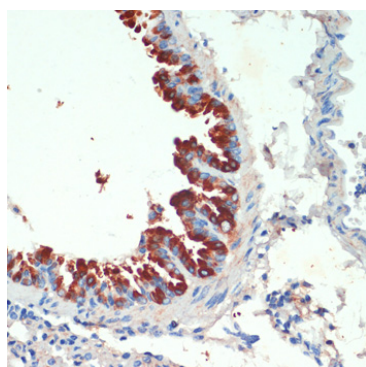
Store at -20°C. Avoid freeze / thaw cycles.

Buffer: PBS with 0.01% thimerosal, 50% glycerol, pH7.3.

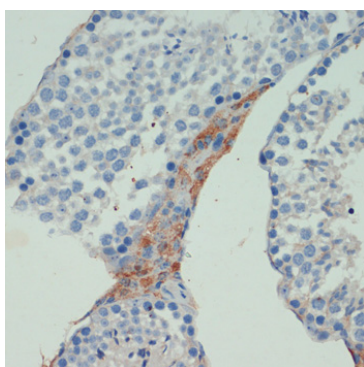
## Validation Data



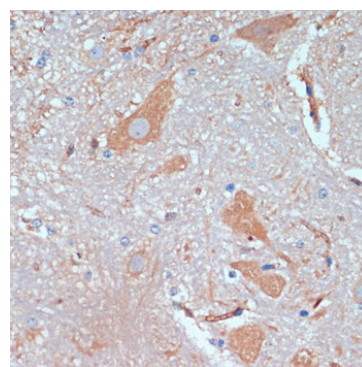
Western blot analysis of various lysates using KIF5B Rabbit pAb (A15284) at 1:1000 dilution. Secondary antibody: HRP Goat Anti-Rabbit IgG (H+L) (AS014) at 1:10000 dilution. Lysates/proteins: 25µg per lane. Blocking buffer: 3% nonfat dry milk in TBST. Detection: ECL Basic Kit (RM00020). Exposure time: 1s.



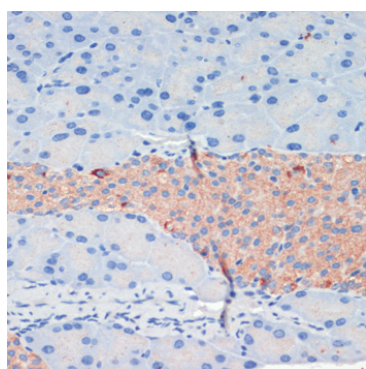
Immunohistochemistry analysis of paraffin-embedded mouse lung using KIF5B Rabbit pAb (A15284) at dilution of 1:200 (40x lens). Perform microwave antigen retrieval with 10 mM PBS buffer pH 7.2 before commencing with IHC staining protocol.



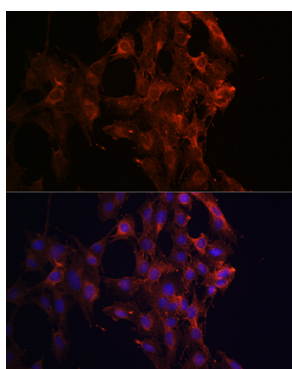
Immunohistochemistry analysis of paraffin-embedded mouse testis using KIF5B Rabbit pAb (A15284) at dilution of 1:200 (40x lens). Perform microwave antigen retrieval with 10 mM PBS buffer pH 7.2 before commencing with IHC staining protocol.



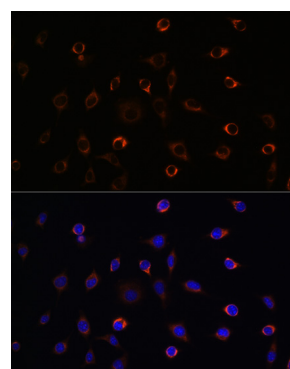
Immunohistochemistry analysis of paraffin-embedded mouse spinal cord using KIF5B Rabbit pAb (A15284) at dilution of 1:200 (40x lens). Perform microwave antigen retrieval with 10 mM PBS buffer pH 7.2 before commencing with IHC staining protocol.



Immunohistochemistry analysis of paraffin-embedded mouse pancreas using KIF5B Rabbit pAb (A15284) at dilution of 1:200 (40x lens). Perform microwave antigen retrieval with 10 mM PBS buffer pH 7.2 before commencing with IHC staining protocol.



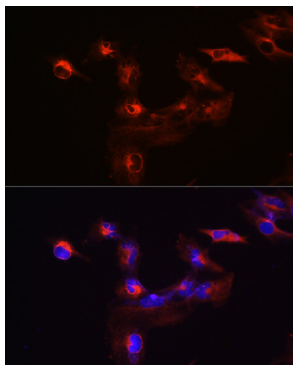
Immunofluorescence analysis of C6 cells using KIF5B Rabbit pAb (A15284) at dilution of 1:100 (40x lens). Secondary antibody: Cy3 Goat Anti-Rabbit IgG (H+L) (AS007) at 1:500 dilution. Blue: DAPI for nuclear staining.



Immunofluorescence analysis of L929 cells using KIF5B Rabbit pAb (A15284) at dilution of 1:100 (40x lens). Secondary antibody: Cy3 Goat Anti-Rabbit IgG (H+L) (AS007) at 1:500 dilution. Blue: DAPI for nuclear staining.

## Validation Data

---



Immunofluorescence analysis of U-251 MG cells using KIF5B Rabbit pAb (A15284) at dilution of 1:100 (40x lens). Secondary antibody: Cy3 Goat Anti-Rabbit IgG (H+L) (AS007) at 1:500 dilution. Blue: DAPI for nuclear staining.