

# SERPINB2 Rabbit pAb

Catalog No.: A15297 **3 Publications**

## Basic Information

### Observed MW

47kDa

### Calculated MW

47kDa

### Category

Primary antibody

### Applications

ELISA, WB

### Cross-Reactivity

Human

## Background

Predicted to enable serine-type endopeptidase inhibitor activity. Predicted to be involved in negative regulation of endopeptidase activity. Predicted to be located in extracellular region and plasma membrane. Predicted to be active in extracellular space.

## Recommended Dilutions

WB 1:200 - 1:2000

## Immunogen Information

### Gene ID

5055

### Swiss Prot

P05120

### Immunogen

Recombinant fusion protein containing a sequence corresponding to amino acids 1-415 of human SERPINB2 (NP\_002566.1).

### Synonyms

PAI; PAI2; PAI-2; PLANH2; HsT1201; SERPINB2

## Contact

 | 400-999-6126

 | [cn.market@abclonal.com.cn](mailto:cn.market@abclonal.com.cn)

 | [www.abclonal.com.cn](http://www.abclonal.com.cn)

## Product Information

### Source

Rabbit

### Isotype

IgG

### Purification

Affinity purification

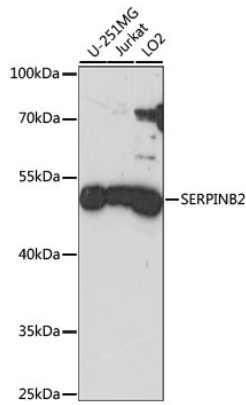
### Storage

Store at -20°C. Avoid freeze / thaw cycles.

Buffer: PBS with 0.01% thimerosal, 50% glycerol, pH7.3.

## Validation Data

---



Western blot analysis of various lysates using SERPINB2 Rabbit pAb (A15297) at 1:1000 dilution.  
Secondary antibody: HRP Goat Anti-Rabbit IgG (H+L) (AS014) at 1:10000 dilution.  
Lysates/proteins: 25µg per lane.  
Blocking buffer: 3% nonfat dry milk in TBST.  
Detection: ECL Basic Kit (RM00020).  
Exposure time: 90s.