

STYX Rabbit pAb

Catalog No.: A15320

Basic Information

Observed MW

25kDa

Calculated MW

25kDa

Category

Primary antibody

Applications

WB,ELISA

Cross-Reactivity

Human

Background

The protein encoded by this gene is a pseudophosphatase, able to bind potential substrates but lacking an active catalytic loop. The encoded protein may be involved in spermiogenesis. Two transcript variants encoding the same protein have been found for these genes.

Recommended Dilutions

WB 1:200 - 1:2000

ELISA Recommended starting concentration is 1 µg/mL. Please optimize the concentration based on your specific assay requirements.

Immunogen Information

Gene ID

6815

Swiss Prot

Q8WUJ0

Immunogen

Recombinant protein (or fragment). This information is considered to be commercially sensitive.

Synonyms

STYX

Contact

☎ | 400-999-6126

✉ | cn.market@abclonal.com.cn

🌐 | www.abclonal.com.cn

Product Information

Source

Rabbit

Isotype

IgG

Purification

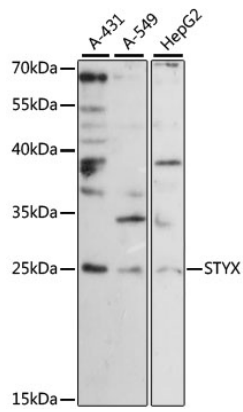
Affinity purification

Storage

Store at -20°C. Avoid freeze / thaw cycles.

Buffer: PBS with 0.01% thimerosal, 50% glycerol, pH7.3.

Validation Data



Western blot analysis of various lysates using STYX Rabbit pAb (A15320) at 1:1000 dilution.
Secondary antibody: HRP-conjugated Goat anti-Rabbit IgG (H+L) (AS014) at 1:10000 dilution.
Lysates/proteins: 25µg per lane.
Blocking buffer: 3% nonfat dry milk in TBST.
Detection: ECL Basic Kit (RM00020).
Exposure time: 180s.