

XPNPEP1 Rabbit pAb

Catalog No.: A15327

Basic Information

Observed MW

90kDa

Calculated MW

70kDa

Category

Primary antibody

Applications

ELISA, WB

Cross-Reactivity

Human, Mouse

Background

This gene encodes the cytosolic form of a metalloaminopeptidase that catalyzes the cleavage of the N-terminal amino acid adjacent to a proline residue. The gene product may play a role in degradation and maturation of tachykinins, neuropeptides, and peptide hormones. Alternative splicing results in multiple transcript variants.

Recommended Dilutions

WB 1:200 - 1:2000

Immunogen Information

Gene ID

7511

Swiss Prot

Q9NQW7

Immunogen

Recombinant fusion protein containing a sequence corresponding to amino acids 44-240 of human XPNPEP1 (NP_065116.3).

Synonyms

APP1; SAMP; XPNPEP; XPNPEPL; XPNPEPL1; XPNPEP1

Contact

☎ | 400-999-6126

✉ | cn.market@abclonal.com.cn

🌐 | www.abclonal.com.cn

Product Information

Source

Rabbit

Isotype

IgG

Purification

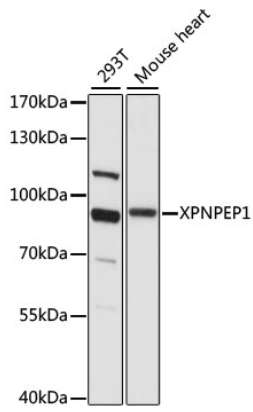
Affinity purification

Storage

Store at -20°C. Avoid freeze / thaw cycles.

Buffer: PBS with 0.01% thimerosal, 50% glycerol, pH7.3.

Validation Data



Western blot analysis of various lysates using XPNPEP1 Rabbit pAb (A15327) at 1:1000 dilution.
Secondary antibody: HRP Goat Anti-Rabbit IgG (H+L) (AS014) at 1:10000 dilution.
Lysates/proteins: 25µg per lane.
Blocking buffer: 3% nonfat dry milk in TBST.
Detection: ECL Basic Kit (RM00020).
Exposure time: 5s.