

MTMR6 Rabbit pAb

Catalog No.: A15348

Basic Information

Observed MW

72kDa

Calculated MW

72kDa

Category

Primary antibody

Applications

WB,ELISA

Cross-Reactivity

Human, Mouse, Rat

Background

Enables phosphatidylinositol-3,5-bisphosphate phosphatase activity and phosphatidylinositol-3-phosphatase activity. Involved in phosphatidylinositol dephosphorylation. Located in cytoplasm and nuclear envelope.

Recommended Dilutions

WB 1:200 - 1:2000

ELISA Recommended starting concentration is 1 µg/mL. Please optimize the concentration based on your specific assay requirements.

Immunogen Information

Gene ID

9107

Swiss Prot

Q9Y217

Immunogen

Recombinant protein (or fragment). This information is considered to be commercially sensitive.

Synonyms

MTMR6

Contact

☎ | 400-999-6126

✉ | cn.market@abclonal.com.cn

🌐 | www.abclonal.com.cn

Product Information

Source

Rabbit

Isotype

IgG

Purification

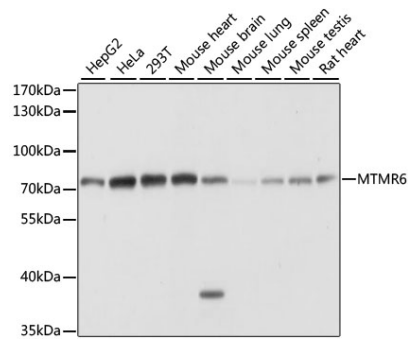
Affinity purification

Storage

Store at -20°C. Avoid freeze / thaw cycles.

Buffer: PBS with 0.01% thimerosal, 50% glycerol, pH7.3.

Validation Data



Western blot analysis of various lysates using MTMR6 Rabbit pAb (A15348) at 1:1000 dilution.
Secondary antibody: HRP-conjugated Goat anti-Rabbit IgG (H+L) (AS014) at 1:10000 dilution.
Lysates/proteins: 25µg per lane.
Blocking buffer: 3% nonfat dry milk in TBST.
Detection: ECL Basic Kit (RM00020).
Exposure time: 1s.