

SEC22B Rabbit pAb

Catalog No.: A15358

Basic Information

Observed MW

25kDa

Calculated MW

25kDa

Category

Primary antibody

Applications

ELISA, WB

Cross-Reactivity

Human, Mouse

Background

The protein encoded by this gene is a member of the SEC22 family of vesicle trafficking proteins. It seems to complex with SNARE and it is thought to play a role in the ER-Golgi protein trafficking. This protein has strong similarity to Mus musculus and Cricetulus griseus proteins.

Recommended Dilutions

WB 1:200 - 1:2000

Immunogen Information

Gene ID

9554

Swiss Prot

O75396

Immunogen

Recombinant fusion protein containing a sequence corresponding to amino acids 85-195 of human SEC22B (NP_004883.3).

Synonyms

ERS-24; SEC22L1; SEC22B

Contact

 | 400-999-6126

 | cn.market@abclonal.com.cn

 | www.abclonal.com.cn

Product Information

Source

Rabbit

Isotype

IgG

Purification

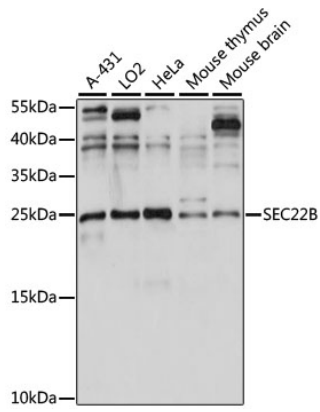
Affinity purification

Storage

Store at -20°C. Avoid freeze / thaw cycles.

Buffer: PBS with 0.01% thimerosal, 50% glycerol, pH7.3.

Validation Data



Western blot analysis of various lysates using SEC22B Rabbit pAb (A15358) at 1:1000 dilution.
Secondary antibody: HRP Goat Anti-Rabbit IgG (H+L) (AS014) at 1:10000 dilution.
Lysates/proteins: 25 μ g per lane.
Blocking buffer: 3% nonfat dry milk in TBST.
Detection: ECL Basic Kit (RM00020).
Exposure time: 60s.