

KIF20B Rabbit pAb

Catalog No.: A15360 **1 Publications**

Basic Information

Observed MW

210kDa

Calculated MW

211kDa

Category

Primary antibody

Applications

ELISA, WB

Cross-Reactivity

Human, Mouse, Rat

Background

Enables several functions, including WW domain binding activity; plus-end-directed microtubule motor activity; and protein homodimerization activity. Involved in positive regulation of cell population proliferation and positive regulation of cytokinesis. Located in several cellular components, including microtubule cytoskeleton; midbody; and nuclear lumen.

Recommended Dilutions

WB 1:200 - 1:2000

Immunogen Information

Gene ID

9585

Swiss Prot

Q96Q89

Immunogen

Recombinant fusion protein containing a sequence corresponding to amino acids 1200-1500 of human KIF20B (NP_057279.2).

Synonyms

CT90; MPP1; KRMP1; MPP-1; MPHOSPH1; KIF20B

Contact

 | 400-999-6126

 | cn.market@abclonal.com.cn

 | www.abclonal.com.cn

Product Information

Source

Rabbit

Isotype

IgG

Purification

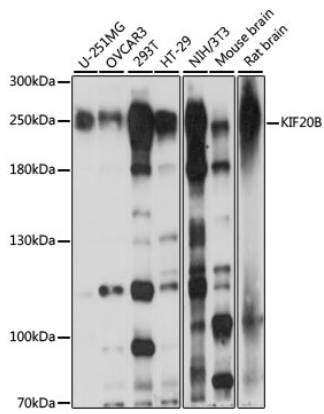
Affinity purification

Storage

Store at -20°C. Avoid freeze / thaw cycles.

Buffer: PBS with 0.01% thimerosal, 50% glycerol, pH7.3.

Validation Data



Western blot analysis of various lysates using KIF20B Rabbit pAb (A15360) at 1:1000 dilution.
Secondary antibody: HRP Goat Anti-Rabbit IgG (H+L) (AS014) at 1:10000 dilution.
Lysates/proteins: 25µg per lane.
Blocking buffer: 3% nonfat dry milk in TBST.
Detection: ECL Basic Kit (RM00020).
Exposure time: 10s.