

SLC25A44 Rabbit pAb

Catalog No.: A15365

Basic Information

Observed MW

37kDa

Calculated MW

35kDa

Category

Primary antibody

Applications

ELISA, WB

Cross-Reactivity

Human, Mouse, Rat

Background

SLC25A44 belongs to the SLC25 family of mitochondrial carrier proteins (Haitina et al., 2006 [PubMed 16949250]).

Recommended Dilutions

WB 1:1000 - 1:5000

Immunogen Information

Gene ID

9673

Swiss Prot

Q96H78

Immunogen

Recombinant fusion protein containing a sequence corresponding to amino acids 140-184 of human SLC25A44 (NP_055470.1).

Synonyms

SLC25A44

Contact

 | 400-999-6126

 | cn.market@abclonal.com.cn

 | www.abclonal.com.cn

Product Information

Source

Rabbit

Isotype

IgG

Purification

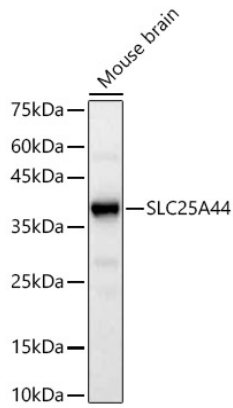
Affinity purification

Storage

Store at -20°C. Avoid freeze / thaw cycles.

Buffer: PBS with 0.01% thimerosal, 50% glycerol, pH7.3.

Validation Data



Western blot analysis of Mouse brain, using SLC25A44 Rabbit pAb (A15365) at 1:2000 dilution.
Secondary antibody: HRP Goat Anti-Rabbit IgG (H+L) (AS014) at 1:10000 dilution.
Lysates/proteins: 25µg per lane.
Blocking buffer: 3% nonfat dry milk in TBST.
Detection: ECL Basic Kit (RM00020).
Exposure time: 30s.