

# GFPT2 Rabbit pAb

Catalog No.: A15374 **1 Publications**

## Basic Information

### Observed MW

77kDa

### Calculated MW

77kDa

### Category

Primary antibody

### Applications

ELISA, WB, IF/ICC

### Cross-Reactivity

Human, Mouse, Rat

## Background

Predicted to enable glutamine-fructose-6-phosphate transaminase (isomerizing) activity. Predicted to be involved in UDP-N-acetylglucosamine metabolic process; fructose 6-phosphate metabolic process; and protein N-linked glycosylation. Predicted to act upstream of or within cellular response to leukemia inhibitory factor. Predicted to be located in cytosol. Implicated in type 2 diabetes mellitus.

## Recommended Dilutions

**WB** 1:200 - 1:2000

**IF/ICC** 1:50 - 1:200

## Immunogen Information

### Gene ID

9945

### Swiss Prot

O94808

### Immunogen

Recombinant fusion protein containing a sequence corresponding to amino acids 200-260 of human GFPT2 (NP\_005101.1).

### Synonyms

GFAT; GFAT2; GFAT 2; GFPT2

## Contact

☎ | 400-999-6126

✉ | [cn.market@abclonal.com.cn](mailto:cn.market@abclonal.com.cn)

🌐 | [www.abclonal.com.cn](http://www.abclonal.com.cn)

## Product Information

### Source

Rabbit

### Isotype

IgG

### Purification

Affinity purification

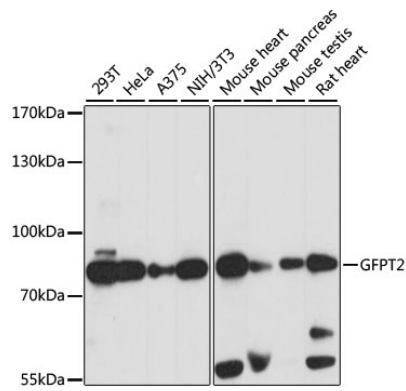
### Storage

Store at -20°C. Avoid freeze / thaw cycles.

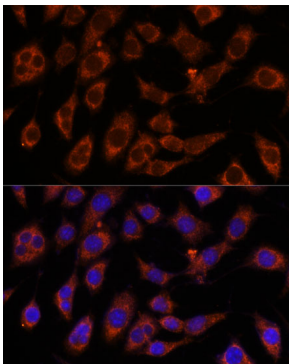
Buffer: PBS with 0.01% thimerosal, 50% glycerol, pH7.3.

## Validation Data

---



Western blot analysis of extracts of various cell lines, using GFPT2 antibody (A15374) at 1:1000 dilution.  
Secondary antibody: HRP Goat Anti-Rabbit IgG (H+L) (AS014) at 1:10000 dilution.  
Lysates/proteins: 25µg per lane.  
Blocking buffer: 3% nonfat dry milk in TBST.  
Detection: ECL Basic Kit (RM00020).  
Exposure time: 3s.



Immunofluorescence analysis of L929 cells using GFPT2 antibody (A15374) at dilution of 1:100. Blue: DAPI for nuclear staining.