

RASGRP2 Rabbit pAb

Catalog No.: A15381 **1 Publications**

Basic Information

Observed MW

69kDa

Calculated MW

69kDa

Category

Primary antibody

Applications

ELISA, WB

Cross-Reactivity

Human

Background

The protein encoded by this gene is a brain-enriched nucleotide exchanged factor that contains an N-terminal GEF domain, 2 tandem repeats of EF-hand calcium-binding motifs, and a C-terminal diacylglycerol/phorbol ester-binding domain. This protein can activate small GTPases, including RAS and RAP1/RAS3. The nucleotide exchange activity of this protein can be stimulated by calcium and diacylglycerol. Four alternatively spliced transcript variants encoding two different isoforms have been found for this gene.

Recommended Dilutions

WB 1:200 - 1:2000

Immunogen Information

Gene ID

10235

Swiss Prot

Q7LDG7

Immunogen

Recombinant fusion protein containing a sequence corresponding to amino acids 1-200 of human RASGRP2 (NP_722541.1).

Synonyms

CDC25L; CALDAG-GEFI; RASGRP2

Contact

 | 400-999-6126

 | cn.market@abclonal.com.cn

 | www.abclonal.com.cn

Product Information

Source

Rabbit

Isotype

IgG

Purification

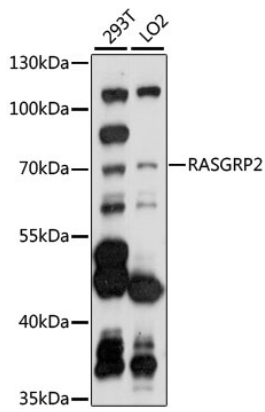
Affinity purification

Storage

Store at -20°C. Avoid freeze / thaw cycles.

Buffer: PBS with 0.01% thimerosal, 50% glycerol, pH7.3.

Validation Data



Western blot analysis of various lysates using RASGRP2 Rabbit pAb (A15381) at 1:1000 dilution. Secondary antibody: HRP Goat Anti-Rabbit IgG (H+L) (AS014) at 1:10000 dilution. Lysates/proteins: 25µg per lane. Blocking buffer: 3% nonfat dry milk in TBST. Detection: ECL Basic Kit (RM00020). Exposure time: 30s.