

# KLHL41 Rabbit pAb

Catalog No.: A15383

## Basic Information

### Observed MW

68kDa

### Calculated MW

68kDa

### Category

Primary antibody

### Applications

ELISA, WB

### Cross-Reactivity

Human, Mouse, Rat

## Background

This gene is a member of the kelch-like family. The encoded protein contains a BACK domain, a BTB/POZ domain, and 5 Kelch repeats. This protein is thought to function in skeletal muscle development and maintenance. Mutations in this gene have been associated with nemaline myopathy (NM), a rare congenital muscle disorder.

## Recommended Dilutions

WB 1:200 - 1:2000

## Immunogen Information

### Gene ID

10324

### Swiss Prot

O60662

### Immunogen

Recombinant fusion protein containing a sequence corresponding to amino acids 1-300 of human KLHL41 (NP\_006054.2).

### Synonyms

Krp1; KBTBD10; SARCOSIN; KLHL41

## Contact

☎ | 400-999-6126

✉ | [cn.market@abclonal.com.cn](mailto:cn.market@abclonal.com.cn)

🌐 | [www.abclonal.com.cn](http://www.abclonal.com.cn)

## Product Information

### Source

Rabbit

### Isotype

IgG

### Purification

Affinity purification

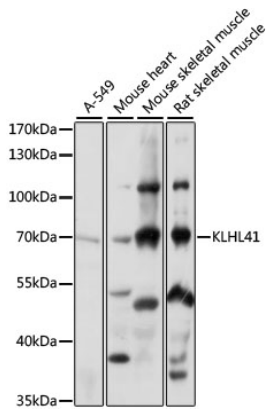
### Storage

Store at -20°C. Avoid freeze / thaw cycles.

Buffer: PBS with 0.01% thimerosal, 50% glycerol, pH7.3.

## Validation Data

---



Western blot analysis of various lysates using KLHL41 Rabbit pAb (A15383) at 1:1000 dilution.  
Secondary antibody: HRP Goat Anti-Rabbit IgG (H+L) (AS014) at 1:10000 dilution.  
Lysates/proteins: 25µg per lane.  
Blocking buffer: 3% nonfat dry milk in TBST.  
Detection: ECL Basic Kit (RM00020).  
Exposure time: 1s.