

LMAN2 Rabbit pAb

Catalog No.: A15394

Basic Information

Observed MW

39kDa

Calculated MW

40kDa

Category

Primary antibody

Applications

ELISA, WB, IF/ICC

Cross-Reactivity

Mouse

Background

This gene encodes a type I transmembrane lectin that shuttles between the endoplasmic reticulum, the Golgi apparatus and the plasma membrane. The encoded protein binds high mannose type glycoproteins and may facilitate their sorting, trafficking and quality control.

Recommended Dilutions

WB	1:200 - 1:2000
IF/ICC	1:50 - 1:200

Immunogen Information

Gene ID

10960

Swiss Prot

Q12907

Immunogen

Recombinant fusion protein containing a sequence corresponding to amino acids 190-320 of human LMAN2 (NP_006807.1).

Synonyms

GP36B; VIP36; C5orf8; LMAN2

Contact

☎ | 400-999-6126

✉ | cn.market@abclonal.com.cn

🌐 | www.abclonal.com.cn

Product Information

Source

Rabbit

Isotype

IgG

Purification

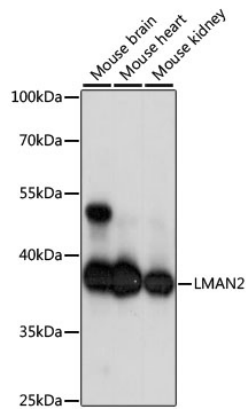
Affinity purification

Storage

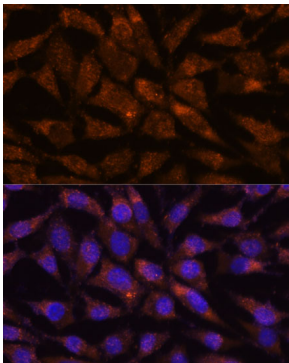
Store at -20°C. Avoid freeze / thaw cycles.

Buffer: PBS with 0.01% thimerosal, 50% glycerol, pH7.3.

Validation Data



Western blot analysis of various lysates using LMAN2 Rabbit pAb (A15394) at 1:1000 dilution.
Secondary antibody: HRP Goat Anti-Rabbit IgG (H+L) (AS014) at 1:10000 dilution.
Lysates/proteins: 25µg per lane.
Blocking buffer: 3% nonfat dry milk in TBST.
Detection: ECL Basic Kit (RM00020).
Exposure time: 1s.



Immunofluorescence analysis of L929 cells using LMAN2 Rabbit pAb (A15394) at dilution of 1:100. Secondary antibody: Cy3 Goat Anti-Rabbit IgG (H+L) (AS007) at 1:500 dilution. Blue: DAPI for nuclear staining.